

# REVERSAL

**GUIDE** Version EMEA



# CONTENTS

<b>REQUIREMENTS.....</b>	<b>3</b>
<b>THE PROCESS .....</b>	<b>4-6</b>
<b>CHECKLIST AND GTX REVERSAL TOOL.....</b>	<b>7-9</b>



# REQUIREMENTS

## ▶ COMPUTER SPECS

- ▶ Windows 10 (64 bit only. Will not run on Mac)
- ▶ CPU with 2 GHz or above
- ▶ RAM with 4 GB or above
- ▶ XGA (1024 x 728) or higher

## ▶ GTX SERIES PRINTER

**NOTE:** Before downloading the **Reversal Tool**, please make sure that you download the latest **Software/Firmware** designed for your printer model and have it installed on your machine on a PC.

1. GTX - Driver  
GTX - Firmware
2. GTXpro/GTXpro Bulk - Driver  
GTXpro/GTXpro Bulk - Firmware
3. DTF Software
  - ▶ Brother Reversal Tool
  - ▶ Cadlink Rip Software + DTF Modul

Download at <https://base.brother.digital/driver-software/>

## ▶ INNOBELLA TEXTILE INKS

Only use Innobella Textile inks

## ▶ Recommended Film/Adhesive: KODAK DIRECT TO FILM MATERIALS

The direct to film transfer sheets to be printed on.

- Part - N40002200 - **KODAK Transfer Film A3 (100 Sheets)**
- Part - N40002147 - **KODAK Transfer Film A3+ (100 Sheets)**
- Part - N40002201 - **KODAK Transfer Film ROLL (30cmX100m)**
- Part - N40002203 - **KODAK Transfer Film ROLL (33cmx100m)**
- Part - N40002202 - **KODAK Transfer Film ROLL (60cmx100m)**
- Part - N40002145 - **KODAK White Powder (1KG)**
- Part - N40002146 - **KODAK Black Powder (1KG)**

## ▶ CONVEYOR DRYER

To cure the printed direct to film sheets

## ▶ HEAT PRESS (Pneumatic style recommend)

To apply film to garment

The term 'recommended' in this document refers to the articles and machines used when tested by Brother and does not guarantee that direct to film printing is possible by using these. Please test it thoroughly before using. This method has only been tested on a limited number of substrates.

# THE PROCESS

## OVERVIEW

### STEP 1

Print on the film



### STEP 2

Evenly coat the film with powder



### STEP 3

Melting the powder



Conveyer

100° - 120°C

2 - 3 min

or

Heatpress (hovering)

140° - 150°C

3 - 5 min

### STEP 4

Heat press film to object and remove film



Heatpress

160° - 180°C

10 - 20 sec

2.8 - 3.5 bar

## The Direct To Film Process



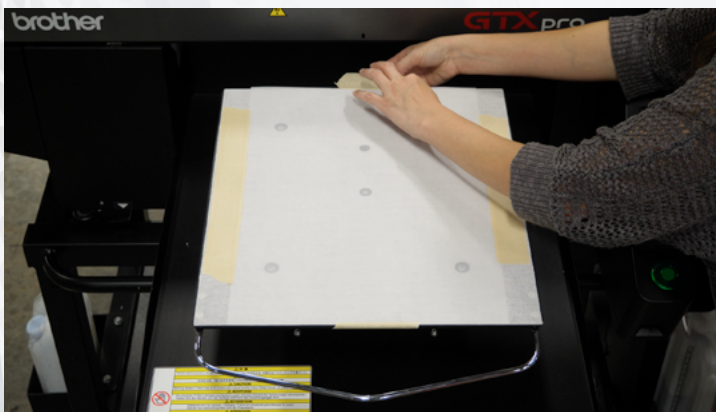
# THE PROCESS

## DETAILS

### STEP 1

#### Print on the film

- ▶ **Ink settings:** Leave color multi-pass turned on for both CMYK and CMYK+W
  - ▶ CMYK only with ink volume 5 or 6, double print set to 0 and color multi-pass turned ON.
  - ▶ For CMYK+White, choose ink volume 5 with a highlight of 3 and a mask of 2 and add a minimum whiteness of 1.
- ▶ **Put film on the platen:** The film will have a shiny side and a matte side. Always print on the matte side. With matte side face up, tape down the film to the platen to keep it from lifting or shifting during the printing process.



**TIP:** Several images can be placed on one sheet and then cut out to be applied to different style garments or objects.

**NOTE ON TRANSPARENT FADES:** Where the CMYK+White film print doesn't do as well is in the transparent fade areas. One other drawback is the white ink takes on a slight grey tint and not an ultra-bright white. When printing an image that fades from solid to transparent, the area will appear slightly choppy.



## STEP 2

### Evenly coat the film with powder

- ▶ Before working the adhesive powder, please make sure to wear gloves, N95 mask and protective eyewear.
- ▶ Place film within a large plastic container to contain excess powder.
- ▶ Use either a salt/pepper shaker, powder sugar shaker or a glitter shaker for convenience.
- ▶ Apply an even coat of powder to the printed film.

## STEP 3

### Melting the powder

CMYK+W and Powder

100° - 120°C

2 - 3 min

**TIP:** If you have excess powder on the film in the non-printed areas after the film and powder has been cured, you can very carefully buff it off with a small scrap of a t-shirt or an artists paintbrush. Be careful not to accidentally rub off the printed areas as they are delicate.

## STEP 4

### Heat press film to object and remove film

- ▶ Flip film to ensure the printed (matte) side is touching the garment or object to be printed on. Apply film to object: between 160° - 180°C for 10 to 20 seconds and use a medium pressure (2.8-3.5 bar).
- ▶ Wait for film to cool before removing it from the garment after pressing for best results.

**IMPORTANT:** If the heat is below 160°C when pressing the film to the material, then the ink will not fully transfer to the object. You can repress the film and object at the correct temperature and the ink will separate from the film cleanly.

**SPECIAL MATERIALS:** On materials with medium to deep ridges (i.e. Blue jeans, canvas bags, mouse pads, pocket seams) a better bond is created and contours to the fabric ridges if the print is pressed a second time without the film transfer paper covering it. For printing on a hoodie, you cannot place the print transfer over a zipper unless you take the time to cut the zipper area free.

# CHECKLIST

## FIRMWARE

Make sure that the latest Firmware is installed.

## DRIVER

Make sure to download and install the latest Printer Driver.  
Computer (Windows)

## PRODUCTS

- Part - N40002200 - **KODAK Transfer Film A3 (100 Sheets)**
- Part - N40002147 - **KODAK Transfer Film A3+ (100 Sheets)**
- Part - N40002201 - **KODAK Transfer Film ROLL (30cmX100m)**
- Part - N40002203 - **KODAK Transfer Film ROLL (33cmx100m)**
- Part - N40002202 - **KODAK Transfer Film ROLL (60cmx100m)**
- Part - N40002145 - **KODAK White Powder (1KG)**
- Part - N40002146 - **KODAK Black Powder (1KG)**

**IMPORTANT:** The product handling of the Transfer Film and Hot Melt Powder could be different from brand to brand. The different transfer films could be coated with different chemicals as well as the composition of the Powder may vary. Therefore, always make sure to carefully read the Instruction Manual of the brand product in advance. Curing times, temperatures and hot or cold peel are among the main features which may vary. Print tests are highly recommended to meet the individual requirements and to achieve high quality DTF printing results.

# GTX REVERSAL TOOL

Here we introduce the Brother Reversal Tool. It will give you the possibility to use your **GTX** or **GTXpro/GTXpro Bulk** printer for Direct to Film (DTF) printing.

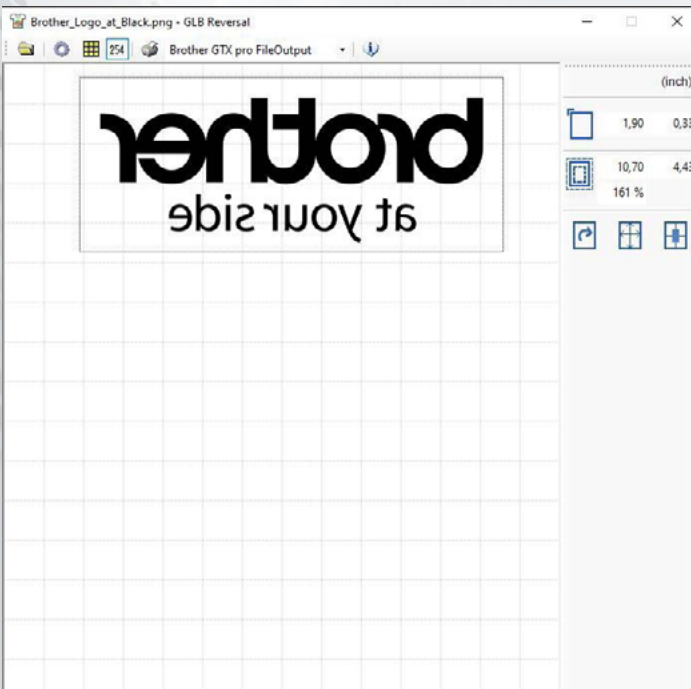
This is a guideline on how to use the Brother Reversal Tool on the **GTX** and **GTXpro/GTXpro Bulk** printer computer (Windows). The Reversal Tool is a solution to automatically mirror the print data. This Tool offers print settings which meet DTF requirements of reversed CMYK + White and allows you to print in one efficient job.

To begin, copy the Reversal Tool on your computer and start.

# USING THE REVERSAL TOOL

## ADJUSTING THE SETTINGS

This is an example of the Reversal Tool showing the **automatically reversed print data**.



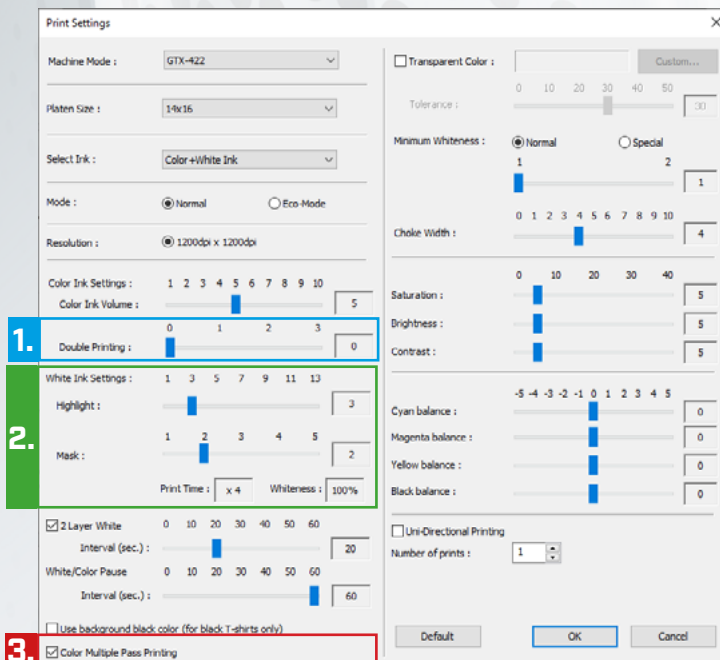
By creating print data or sending the design directly to the printer, the sequence of the print data will be **reversed automatically**.

This software allows the user to not only control the highlight and mask when printing with white ink, but also allows control of the ink volume along with the white ink settings.

### Reversal print process

1. CMYK
2. White

This is an example of the Reversal Tool showing the **recommended print settings**.



The Reversal Tool offers several print settings which will optimize individual requirements to achieve high quality DTF printing results.

### 1. Double Printing (CMYK)

- 0 - Single Layer
- 1 - Double Layer
- 2 - Double Layer with delay
- 3 - Double Layer with more delay

### 2. White Ink Settings

Because of the limited absorption capacity of the Transfer Film, the amount of White Ink can be set between a minimum of 50% up to 200% maximum.

### 3. Color Multiple Pass printing

This setting should be always activated to avoid banding issues.



# USING THE REVERSAL TOOL

## FILE VIEWER

This is an example of the File Viewer output of the created print file by the Reversal Tool.

