



Stedman[®]
collection _____

2020 English

Stedman® Highlights in 2020

Print it. Wear it. Like it.

Recycled



It's time to make a change. As one of the first in our market, we have decided to take a step towards more eco-friendly sportswear production. With our new styles made from recycled plastic bottles, we can make our small contribution to reducing the environmental impact caused by polyester production. More information on page 4.

Organic Cotton



Because we care. Our super soft organic T-shirts are made of 100% OCS-certified organic cotton, grown without the use of toxic and persistent pesticides and fertilizers. A sustainable, eco-friendly cultivation contributes to the protection and conservation of our water resources, to the regeneration and improvement of soil fertility and to the protection of our planet in general.

Unisex



Clothing that caters to everyone by not keeping things limited and one-dimensional. With fashion trends like “boyfriend style” and oversized casual cuts, the demand for fashion not focused on gender is higher than ever. We are excited about our expanding gender neutral fashion range in 2020.



Stedman[®]

collection



T-shirts, Polos & More10-55

News 21, 25-27, 42

Organic.....16-17, 22-23, 29, 37

Unisex25



Sweats56-65

News 59, 64-65

Recycled..... 64-65

Unisex59-60, 64-65



Sports 66-91

News68-77, 86

Recycled.....68-75



Jackets & Fleece..... 92-111

News 94-95

Recycled..... 94-95

**RECYCLED
MATERIAL**



Did you know that ...

... every year more than 8 million metric tons of plastic waste end up in our oceans killing millions of seabirds and other animals?

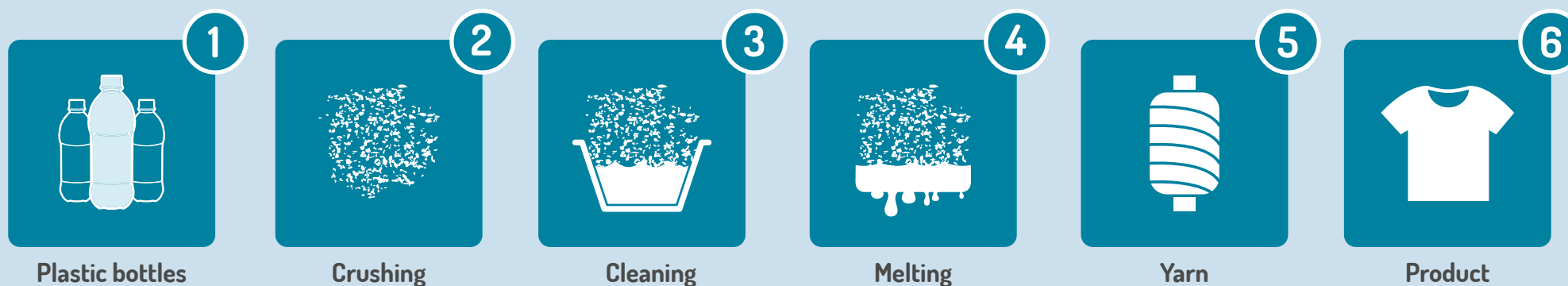
... 1 million plastic bottles are bought worldwide every minute?

... only 9% of the plastic ever made has been recycled?

LET'S MAKE A CHANGE!

All of our new 2020 styles containing polyester are **made of recycled plastic bottles.**

As one of the first in our market, we have decided to take a step towards more eco-friendly sportswear production. With **our new styles made from recycled plastic bottles**, we can make our small contribution to reducing the environmental impact caused by polyester production.



Our recycled polyester offers the same high-quality characteristics as “normal” polyester but with a **smaller environmental footprint**, keeping plastics from going to landfills and our oceans. Furthermore, the production of recycled polyester requires far fewer resources than that of new fibres and generates **significantly less CO₂ emissions**.

For a good feeling.

Our sustainable collection includes eco-friendly styles made of organically grown cotton and modern sportswear made from recycled plastic bottles.



p. 16

ST9200 James Organic Crew Neck



p. 16

ST9300 Janet Organic Crew Neck



p. 17

ST9370 Jamie Organic Kids



p. 37

ST9210 James Organic V-neck



p. 37

ST9310 Janet Organic V-neck



p. 29

ST9220 Slub Organic



p. 29

ST9320 Slub Organic



p. 22

ST2020 Classic-T Organic



p. 22

ST2620 Classic-T Organic



p. 23

ST2220 Classic-T Organic Kids



Contains 100% Organically Grown
Cotton Certified by Control
Union Certifications (CU 819645)

ECO-FRIENDLY COTTON

**100% certified to the Organic Content Standard (OCS).
Environmentally friendly,
fashionable and soft on the skin.**



p. 69

ST8830 Recycled Sports-T Move



p. 69

ST8930 Recycled Sports-T Move



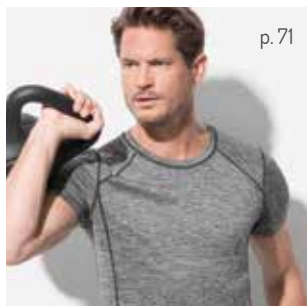
p. 75

ST5840 Recycled Scuba Jacket



p. 75

ST5940 Recycled Scuba Jacket



p. 71

ST8840 Recycled Sports-T Reflect



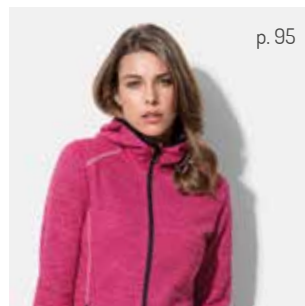
p. 71

ST8940 Recycled Sports-T Reflect



p. 95

ST5860 Recycled Fleece Jacket Hero



p. 95

ST5960 Recycled Fleece Jacket Hero

RECYCLED MATERIAL

**Reduce. Reuse. Recycle.
Save our oceans.**



p. 73

ST8850 Recycled Sports-T Race



p. 73

ST8950 Recycled Sports-T Race



p. 64

ST5630 Recycled Unisex Sweat Hoodie



p. 65

ST5650 Recycled Unisex Sweatpants

STEDMAN®

THE BRAND YOU CAN TRUST



We pride ourselves in our ethical ways of business and believe it is our part as global citizens to contribute to sustainable and ethically-minded production.



Excellent availability • Competitive pricing • Organic products **OCS-certified** • textileexchange.org
 Central warehouse and **distribution center in Europe** • Strict **quality checks** • Own local **CSR team**
 Corporate Social Responsibility • **Recycled Material** • Own **local Quality Control** team
amfori BSCI compliant • **OEKO-TEX® Standard 100** • oeko-tex.com



Our organic styles are made of 100% OCS-certified organic ring-spun cotton; certified by Control Union Certifications (CU 819645).



Our recycled polyester offers high-quality characteristics but with a smaller environmental footprint, keeping plastics from going to landfills and our oceans.



Our textile articles and components have been tested for harmful substances, assuring high product safety. Currently not certified, but produced according to the same strict specifications: Biker and Quilted Jackets.



Member of amfori, the leading global business association for open and sustainable trade. We improve the social performance of our supply chain via amfori BSCI.



All our articles are subject to strict quality controls. With our own quality management team on site, we ensure that our high demands on material and product properties are met in production. The SPQ seal thus stands reliably for tested high quality, which you can trust!



Stedman[®] T-shirts, Polos & More

T-shirts, polo shirts, tank tops and underwear made
of high-quality cotton and viscose blends.

Shawn Slub Crew Neck
(page 30)

* red label = decoration suggestion

CREW NECK T-SHIRTS



ST9730 · XS-XL · 170 g/m² · 📦 24

Claire Relaxed

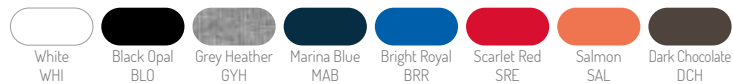
for women

95% ring-spun combed cotton, 5% elastane; single jersey "full feeder" (GYH: 82% cotton, 14% viscose, 4% elastane) • reinforced shoulder seams, self-fabric collar, neck tape, side seams, small size label in the collar, care label in the side seam

ST9630 · S-2XL · 170 g/m² · 📦 24

Clive Relaxed

for men





Our popular bestsellers made of stretchy, combed cotton with elastane. Choose between our relaxed style with a normal fit or the body-fitted alternative for a more figure-hugging silhouette.



ST9600 · S-2XL · 170 g/m² · 24

ST9700 · S-XL · 170 g/m² · 24

Clive Crew Neck

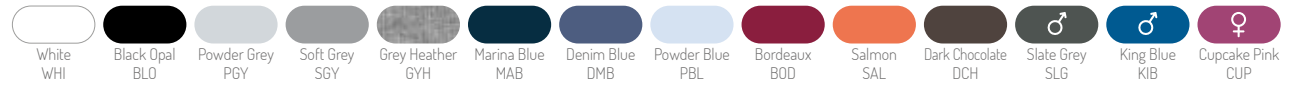
for men

Claire Crew Neck

for women

95% ring-spun combed cotton, 5% elastane; single jersey "full feeder" (GYH: 82% cotton, 14% viscose, 4% elastane) · reinforced shoulder seams, self-fabric collar, contrast neck tape, side seams, small size label in the collar, care label in the side seam · **Women:** wide neck drop

Men's size 2XL only in: White, Black Opal, Soft Grey, Grey Heather, Denim Blue, Salmon, Dark Chocolate, Slate Grey



♂ only for men
♀ only for women



Sleek and silky material with fancy raw edges and an oversized fit.



SILKY
VISCOSE

NO LABEL
IN COLLAR

OVERSIZED FIT

SILKY
VISCOSE

NO LABEL
IN COLLAR

OVERSIZED FIT

ST9850 · S-2XL · 140 g/m² · 📦 24

ST9950 · S-XL · 140 g/m² · 📦 24

David Oversized

for men

Daisy Oversized

for women

65% polyester, 35% viscose; melange, single jersey · super soft, light and silky fabric with viscose, raw edge collar with a slim sewed-on self-fabric tape, wide neck drop, side seams, small size label and care label in the side seam





COMBED
COTTON

NO LABEL
IN COLLAR

COMBED
COTTON

NO LABEL
IN COLLAR

NORMAL FIT

NORMAL FIT



Soft blended fabric in beautiful
melange colours.

ST9800 · S-2XL · 145 g/m² · 24

ST9900 · S-XL · 145 g/m² · 24

Luke Crew Neck

for men

Lisa Crew Neck

for women

60% ring-spun combed cotton, 40% polyester; melange, single jersey • heathered look, hem and sleeve hems with grain stitches, reinforced shoulder seams, rib collar with elastane, taped shoulder to shoulder, side seams, small size label in the collar, care label in the side seam





Contains 100% Organically Grown Cotton Certified by Control Union Certifications (CU 819645)

ECO-FRIENDLY COTTON

Eco-friendly, combed cotton for the whole family.



COMBED COTTON

NO LABEL IN COLLAR



NORMAL FIT

ST9300 · S-XL · 155 g/m² · 📦 24

Janet Organic Crew Neck

for women

100% OCS-certified organic ring-spun combed cotton; single jersey · reinforced shoulder seams, rib collar with elastane, taped shoulder to shoulder, side seams, small size label in the collar, care label in the side seam · **Women:** wide neck drop



COMBED COTTON

NO LABEL IN COLLAR



NORMAL FIT

ST9200 · S-2XL · 155 g/m² · 📦 24

James Organic Crew Neck

for men



♂ only for men | ♀ only for women



COMBED
COTTON

NO LABEL
IN COLLAR

EU	Age	Body height
S	7-8 years	122-128 cm
M	9-10 years	134-140 cm
L	11-12 years	146-152 cm
XL	12-13 years	158-164 cm

NORMAL FIT



ST9370 · S-XL (122-164) · 155 g/m² · 📦 24

Jamie Organic Kids

for children

100% OCS-certified organic ring-spun combed cotton; single jersey reinforced shoulder seams, rib collar with elastane, taped shoulder to shoulder, tubular fabric, small size label in the collar, care label in the hem



White
WHI



Black Opal
BLO



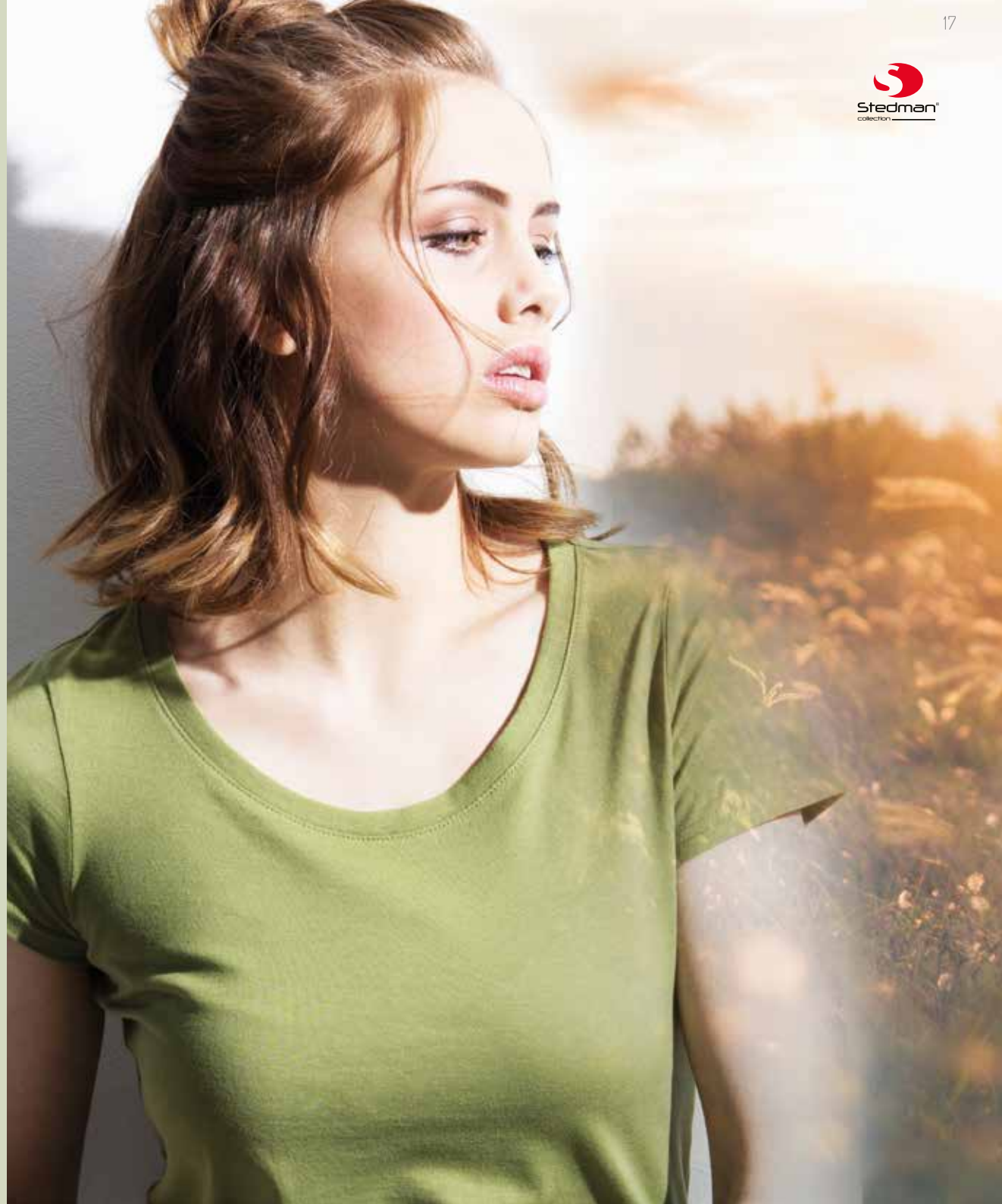
Pepper Red
PER



Indian Yellow
INY



Lavender Purple
LAP

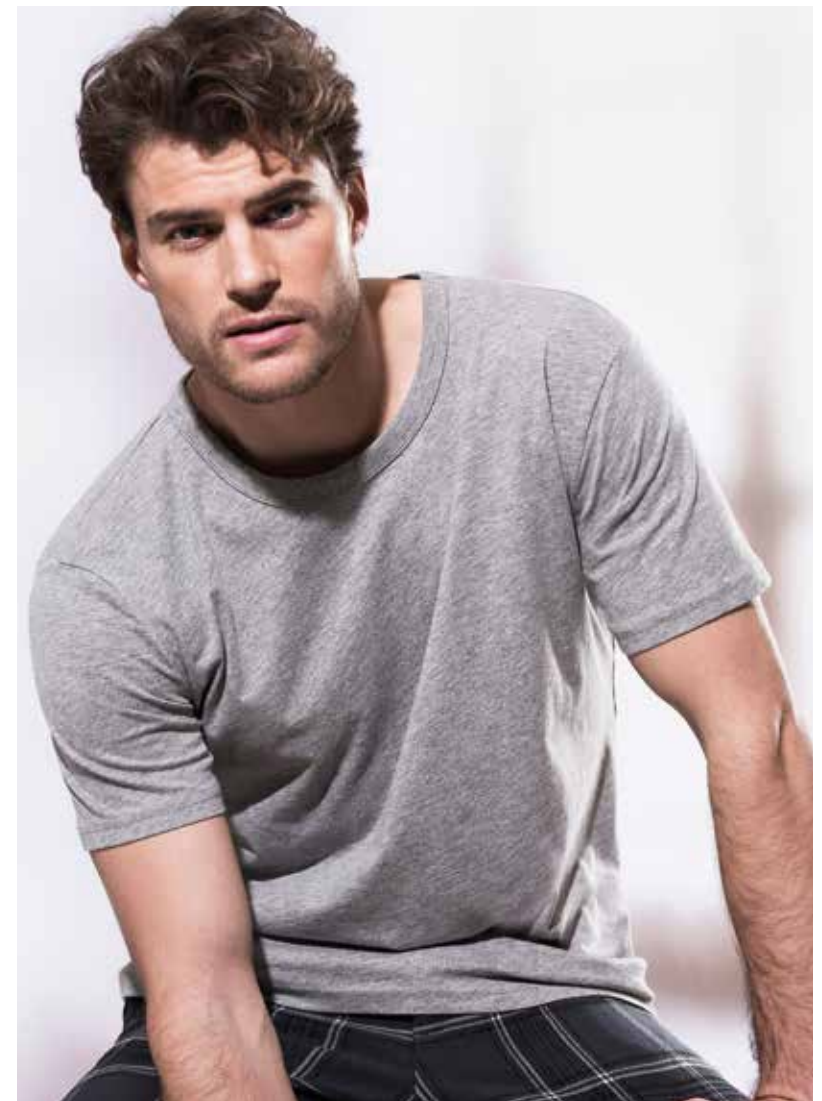


RING-SPUN
COTTON

NO LABEL
IN COLLAR

Durable cotton with
a regular cut and
classic rib collar.

NORMAL FIT

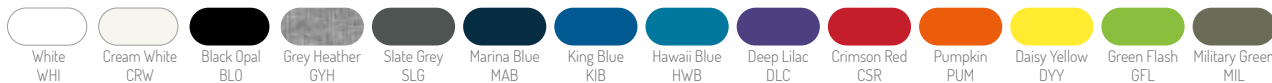


ST9000 · S-2XL · 160 g/m² · 📦 24

Ben Crew Neck

for men

100% ring-spun cotton; single jersey (GYH: 85% cotton, 15% viscose) · collar with rib binding, side seams, small size label in the collar, care label in the side seam



RING-SPUN
COTTON

NO LABEL
IN COLLAR



The body fit alternative with classic rib collar, made of durable cotton.

BODY FIT

ST9020 · S-2XL · 160 g/m² · 24

Morgan Crew Neck

for men

100% ring-spun cotton; single jersey (GYH: 85% cotton, 15% viscose) · collar with rib binding, side seams, small size label in the collar, care label in the side seam

Size 2XL only in: White, Black Opal, Slate Grey



Stedman
collection

Combed cotton and a modern, body fit cut with slim rib collar and cuffs.

BODY FIT



COMBED
COTTON

NO LABEL
IN COLLAR

ST9120 · S-XL · 145 g/m² · 24

Megan Crew Neck

for women

100% ring-spun combed cotton; single jersey (GYH: 85% cotton, 15% viscose) · slim rib collar, wide neck drop, fashionable short sleeves with slim rib cuffs, contrast neck tape, side seams, small size label in the collar, care label in the side seam



COMBED
COTTON

NO LABEL
IN COLLAR

ULTRA
LIGHT
WEIGHT

COMBED
COTTON

NO LABEL
IN COLLAR

ULTRA
LIGHT
WEIGHT

NORMAL FIT

BODY FIT



Very fine, soft and stretchy cotton
with a modern rolled collar.

ST9100 · S-XL · 105 g/m² · 24

ST9110 · S-XL · 105 g/m² · 24

Finest Cotton-T

for men

100% ring-spun combed cotton; single jersey · rolled self-fabric collar, neck tape, side seams, small size label in the collar, care label in the side seam · **Women:** wide neck drop

Finest Cotton-T

for women



White
WHI

Black Opal
BLO

Slate Grey
SLG

Marina Blue
MAB

Crimson Red
CSR



RING-SPUN COTTON



NEW SIZES

RING-SPUN COTTON



The popular heavyweight - now available up to 5XL!

NORMAL FIT

NORMAL FIT

ST2160 · S-2XL · 185 g/m² · 48

ST2100 · S-5XL · 185 g/m² · 96 (3-5XL: 24)

Comfort-T 185

for women

Comfort-T 185

for men

100% ring-spun cotton; single jersey (GYH: 85% cotton, 15% viscose) · size and care label in the collar · Men: taped shoulder to shoulder, tubular fabric · Women: neck tape, side seams

Men's sizes 4-5XL only in: White, Black Opal, Navy Blue

- White WHI
- Black Opal BLO
- Grey Heather GYH
- Navy Blue NAV
- Bright Royal BRR
- Scarlet Red SRE
- Real Grey RGY
- Blue Midnight BLM
- Light Blue LBL
- Orange ORA
- Yellow YEL
- Bottle Green BOG

♂ only for men



Contains 100% Organically Grown
Cotton Certified by Control
Union Certifications (CU 819645)

ECO- FRIENDLY COTTON

The popular Classic-T Organic
for the whole family made of
certified organic cotton.



RING-SPUN
COTTON



NORMAL FIT

ST2620 · XS-XL · 145 g/m² · 48

Classic-T Organic

for women

100% OCS-certified organic ring-spun cotton; single jersey (GYH: 85% cotton, 15% viscose) · size and care label in the collar · **Men:** taped shoulder to shoulder, tubular fabric · **Women:** neck tape, side seams



RING-SPUN
COTTON



NORMAL FIT

ST2020 · S-2XL · 145 g/m² · 48

Classic-T Organic

for men





RING-SPUN
COTTON

EU	Age	Body height
XS	5-6 years	110-116 cm
S	7-8 years	122-128 cm
M	9-10 years	134-140 cm
L	11-12 years	146-152 cm
XL	12-13 years	158-164 cm

NORMAL FIT



ST2220 · XS-XL (110-164) · 145 g/m² · 48

Classic-T Organic Kids

for children

100% OCS-certified organic ring-spun cotton; single jersey (GYH: 85% cotton, 15% viscose) · taped shoulder to shoulder, size and care label in the collar



White
WHI



Black Opal
BLO



Grey Heather
GYH



Real Grey
RGY



Navy Blue
NAV



Bright Royal
BRR



Scarlet Red
SRE



Kiwi Green
KIW



Classic, gender-neutral bestseller
in sizes 2XS to 5XL -
great fit for both men and women.



NEW
SIZES

NEW
COLOUR

RING-SPUN
COTTON



NORMAL FIT

NORMAL FIT

ST2000 · 2XS-5XL · 155 g/m² · 96 (2XS-XS: 48; 3-5XL: 24)

Classic-T Unisex

for men & women

100% ring-spun cotton; single jersey (GYH: 85% cotton, 15% viscose) · classic bestseller, taped shoulder to shoulder, tubular fabric, size and care label in the collar

Sizes 4-5XL only in: White, Black Opal, Ash, Grey Heather, Blue Midnight, Navy Blue, Bright Royal, Scarlet Red



XS-XL for kids

NEW
COLOUR

RING-SPUN
COTTON

NORMAL FIT



NORMAL FIT

ST2200 · 3XS-XL (86-164) · 155 g/m² · 📦 96 (3XS-2XS: 48)

Classic-T Kids

for children

100% ring-spun cotton; single jersey (GYH: 85% cotton, 15% viscose) · classic bestseller, taped shoulder to shoulder, tubular fabric (3-2XS: side seams), size and care label in the collar

Sizes 3-2XS only in: White, Black Opal, Navy Blue, Bright Royal, Light Blue, Scarlet Red, Orange



3XS & 2XS for toddlers

EU	Age	Body height
3XS	1-2 years	86-92 cm
2XS	3-4 years	98-104 cm
XS	5-6 years	110-116 cm
S	7-8 years	122-128 cm
M	9-10 years	134-140 cm
L	11-12 years	146-152 cm
XL	12-13 years	158-164 cm

Classic bestseller with extra wide size range for toddlers, kids and teenagers.

NORMAL FIT



RING-SPUN
COTTON

The classic bestseller with a more figure-hugging cut.

BODY FIT



ST2010 · S-2XL · 155 g/m² · 96

Classic-T Fitted

for men

100% ring-spun cotton; single jersey (GYH: 85% cotton, 15% viscose) · taped shoulder to shoulder, tubular fabric, size and care label in the collar

NEW
SIZES

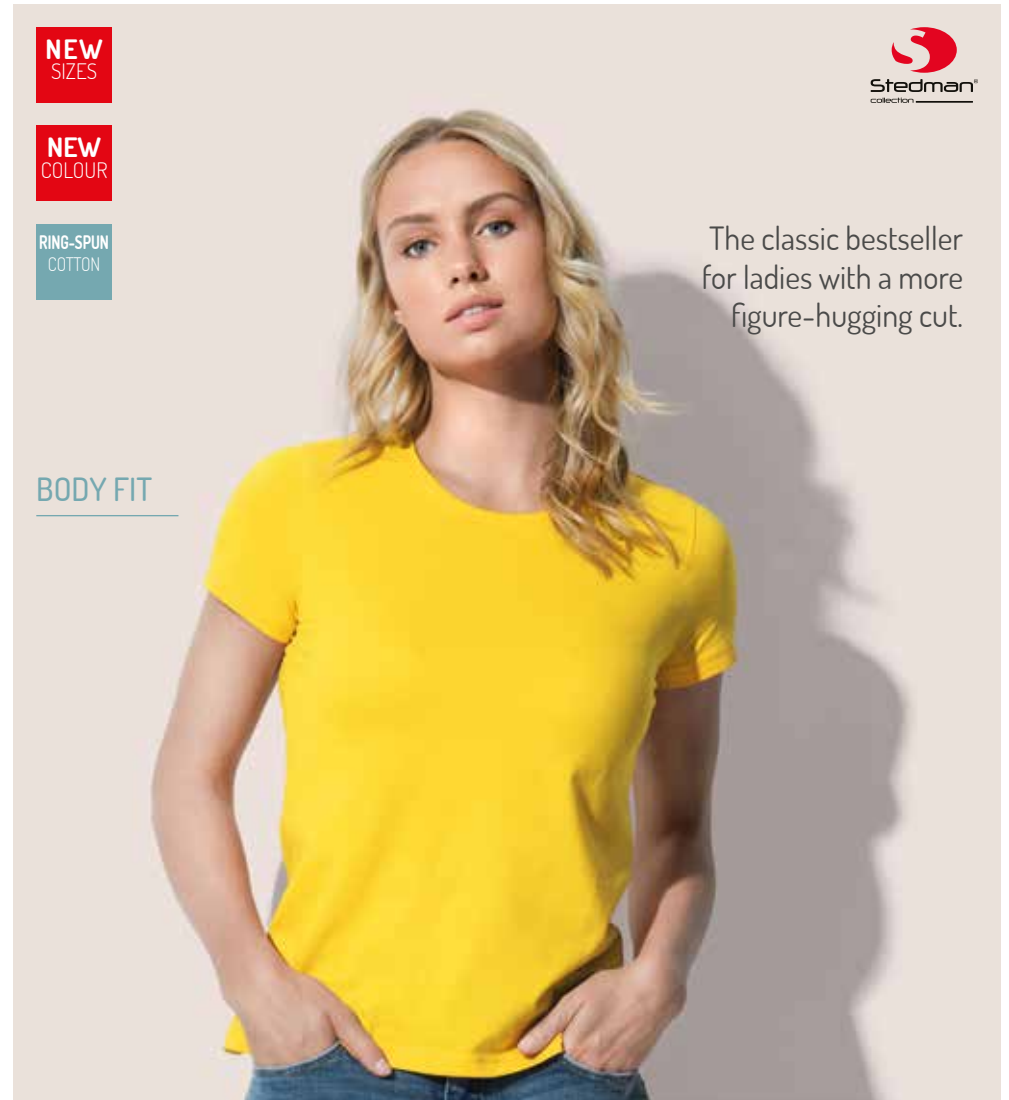
NEW
COLOUR

RING-SPUN
COTTON



The classic bestseller for ladies with a more figure-hugging cut.

BODY FIT



ST2600 · XS-3XL · 155 g/m² · 96 (XS: 48; 2-3XL: 24)

Classic-T Fitted

for women

100% ring-spun cotton; single jersey (GYH: 85% cotton, 15% viscose) · classic bestseller, neck tape, side seams, size and care label in the collar

Women's size 3XL only in: White, Black Opal, Navy Blue, Scarlet Red



♀ only for women



Contains 100% Organically Grown
Cotton Certified by Control
Union Certifications (CU 819645)

ECO- FRIENDLY COTTON





SLUB
YARN

NO LABEL
IN COLLAR

NORMAL FIT



SLUB
YARN

NO LABEL
IN COLLAR

NORMAL FIT



Earth-friendly, sustainable
organic cotton. Slub yarn
for a texturised look.

ST9220 · S-2XL · 130 g/m² · 24

ST9320 · S-XL · 130 g/m² · 24

Slub Organic

for men

Slub Organic

for women

100% OCS-certified organic ring-spun cotton, slub yarn; single jersey · collar with rib binding, side seams, small size label in the collar, care label in the side seam



White
WHI



Black Opal
BLO



Slate Grey
SLG

SLUB
YARN

NO LABEL
IN COLLAR

NORMAL FIT

SLUB
YARN

NO LABEL
IN COLLAR

NORMAL FIT



Modern slub yarn
for a texturised look.

ST9400 · S-2XL · 140 g/m² ·  24

ST9500 · S-XL · 140 g/m² ·  24

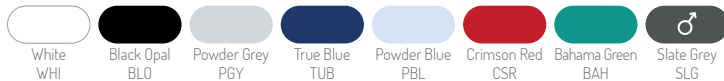
Shawn Slub Crew Neck

for men

Sharon Slub Crew Neck

for women

100% ring-spun cotton, slub yarn; single jersey · slub yarn for a texturised look, hem and sleeve hems with grain stitches, side seams, small size label in the collar, care label in the side seam · **Men:** neck drop with binding · **Women:** reinforced shoulder seams, slim rib collar, wide neck drop, taped shoulder to shoulder



 only for men



Structured slub material
and a modern oversized fit.

ST9450 · S-2XL · 140 g/m² · 📦 24

Shawn Oversized Slub

for men

100% ring-spun cotton, slub yarn; single jersey · slub yarn for a texturised look, wide neck drop with raw edge, decorative chain stitch on collar and hem, slim rib collar, side seams, small size label in the collar, care label in the side seam · **Men:** hem with raw edge, little chest pocket · **Women:** rounded hem with raw edge, taped shoulder to shoulder

ST9550 · S-XL · 140 g/m² · 📦 24

Sharon Oversized Slub

for women



SLUB
YARN

NO LABEL
IN COLLAR

NORMAL FIT

SLUB
YARN

NO LABEL
IN COLLAR

NORMAL FIT



ST9430 · S-2XL · 140 g/m² · 24

Shawn Henley T-shirt

for men

100% ring-spun cotton, slub yarn; single jersey · slub yarn for a texturised look, zigzag stitches on seams, rib collar, 3 metal buttons (nickel-free), neck tape, side seams, small size label in the collar, care label in the side seam · **Men:** wide placket, front yoke · **Women:** narrow placket

ST9530 · S-XL · 140 g/m² · 24

Sharon Henley T-shirt

for women



Fashionable structured slub material
with metal buttons.



White
WHI

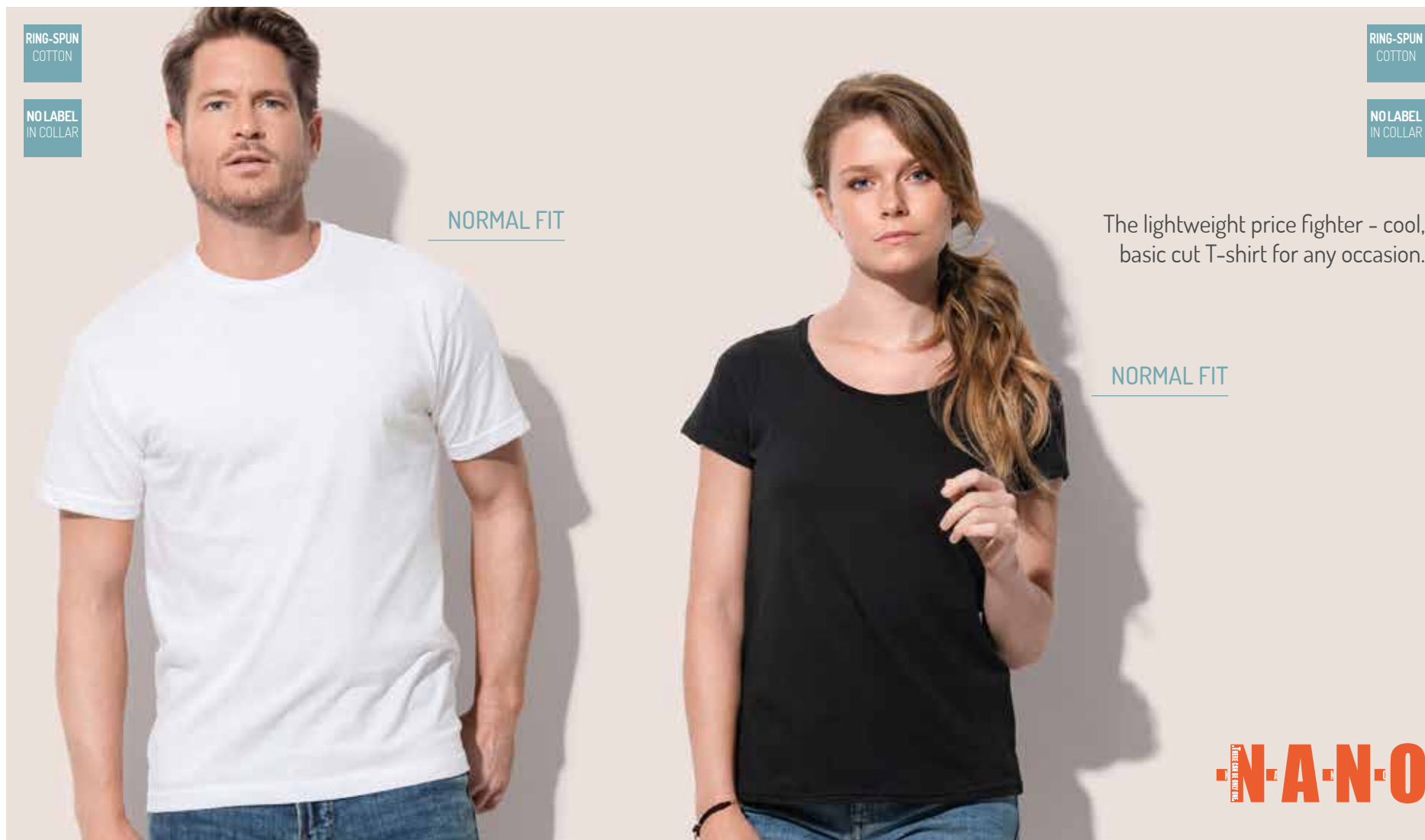


Black Opal
BLO



Slate Grey
SLG

♂ only for men



RING-SPUN
COTTON

NO LABEL
IN COLLAR

NORMAL FIT

RING-SPUN
COTTON

NO LABEL
IN COLLAR

The lightweight price fighter - cool,
basic cut T-shirt for any occasion.

NORMAL FIT

N·A·N·O

N1000 · S-2XL · 135 g/m² · 120

N1100 · S-XL · 135 g/m² · 60

Nano
for men

Nano
for women

100% ring-spun cotton; single jersey · small size label in the collar · **Men:** tubular fabric, care label in the hem · **Women:** wide neck drop, side seams, care label in the side seam



Nano White
WHT



Nano Black
BLK

V-NECK T-SHIRTS

COMBED
COTTON

NO LABEL
IN COLLAR

BODY FIT



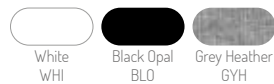
Stretchy, combed cotton
with elastane and a
deep V-neck - ideal as
an undershirt!

ST9690 · S-2XL · 170 g/m² · 📦 24

Dean Deep V-neck

for men

95% ring-spun combed cotton, 5% elastane; single jersey "full feeder" (GYH: 82% cotton, 14% viscose, 4% elastane) · perfect as an undershirt because of its clinging fit and deep V-neck, reinforced shoulder seams, rib collar, neck tape, side seams, small size label in the collar, care label in the side seam



White
WHI

Black Opal
BLO

Grey Heather
GYH

COMBED
COTTONNO LABEL
IN COLLARCOMBED
COTTONNO LABEL
IN COLLAR

BODY FIT

BODY FIT

Body-hugging styles
made of stretchy,
combed cotton with
elastane.

ST9610 · S-2XL · 170 g/m² · 24ST9710 · S-XL · 170 g/m² · 24

Clive V-neck

for men

95% ring-spun combed cotton, 5% elastane; single jersey "full feeder" (GYH: 82% cotton, 14% viscose, 4% elastane) · reinforced shoulder seams, self-fabric collar, contrast neck tape, side seams, small size label in the collar, care label in the side seam · **Women:** wide neck drop

Men's size 2XL only in: White, Black Opal, Grey Heather, Slate Grey

White
WHIBlack Opal
BLOGrey Heather
GYHMarina Blue
MABSlate Grey
SLGKing Blue
KIBCupcake Pink
CUP

♂ only for men | ♀ only for women

Claire V-neck

for women



Contains 100% Organically Grown
Cotton Certified by Control
Union Certifications (CU 819645)

**ECO-
FRIENDLY
COTTON**





COMBED
COTTON

NO LABEL
IN COLLAR

NORMAL FIT



COMBED
COTTON

NO LABEL
IN COLLAR

NORMAL FIT



Eco-friendly, combed cotton certified to the Organic Content Standard 100.

ST9210 · S-2XL · 155 g/m² · 24

ST9310 · S-XL · 155 g/m² · 24

James Organic V-neck

for men

Janet Organic V-neck

for women

100% OCS-certified organic ring-spun combed cotton; single jersey • reinforced shoulder seams, overlapping V-neck, rib collar with elastane, taped shoulder to shoulder, side seams, small size label in the collar, care label in the side seam • **Women:** wide neck drop



♂ only for men | ♀ only for women

COMBED
COTTON

NO LABEL
IN COLLAR

NORMAL FIT

COMBED
COTTON

NO LABEL
IN COLLAR

NORMAL FIT



Soft blended fabric in beautiful
melange colours.

ST9810 · S-2XL · 145 g/m² · 24

ST9910 · S-XL · 145 g/m² · 24

Luke V-neck

for men

60% ring-spun combed cotton, 40% polyester; melange, single jersey · heathered look, hem and sleeve hems with grain stitches, reinforced shoulder seams, overlapping V-neck, rib collar with elastane, taped shoulder to shoulder, side seams, small size label in the collar, care label in the side seam

Lisa V-neck

for women



RING-SPUN
COTTONNO LABEL
IN COLLAR

Durable cotton with a regular cut and classic rib collar.

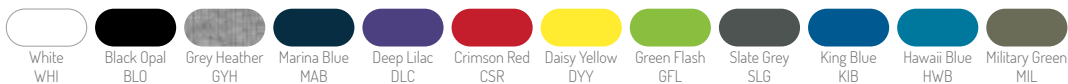
NORMAL FIT

ST9010 · S-2XL · 160 g/m² · 📦 24

Ben V-neck

for men

100% ring-spun cotton; single jersey (GYH: 85% cotton, 15% viscose) · collar with rib binding, side seams, small size label in the collar, care label in the side seam



Combed cotton and a modern, body fit cut with slim rib collar and cuffs.

BODY FIT

COMBED
COTTONNO LABEL
IN COLLAR

ST9130 · S-XL · 145 g/m² · 📦 24

Megan V-neck

for women

100% ring-spun combed cotton; single jersey (GYH: 85% cotton, 15% viscose) · slim rib collar, wide neck drop, fashionable short sleeves with slim rib cuffs, contrast neck tape, side seams, small size label in the collar, care label in the side seam



RING-SPUN
COTTON

RING-SPUN
COTTON

Classic V-neck T-shirts
made of durable
ring-spun cotton.

NORMAL FIT

NORMAL FIT

ST2300 · S-2XL · 155 g/m² · 96

ST2700 · S-2XL · 155 g/m² · 96 (2XL: 24)

Classic-T V-neck

for men

Classic-T V-neck

for women

100% ring-spun cotton; single jersey (GYH: 85% cotton, 15% viscose) · size and care label in the collar · **Men:** taped shoulder to shoulder, tubular fabric · **Women:** neck tape, side seams

Women's size 2XL only in: White, Black Opal, Navy Blue, Scarlet Red



White
WHI



Black Opal
BLO



Grey Heather
GYH



Navy Blue
NAV



Bright Royal
BRR



Ocean Blue
OCB



Deep Berry
DBY



Scarlet Red
SRE



Yellow
YEL



Kiwi Green
KIW



Blue Midnight
BLM



Orange
ORA



Bottle Green
BOG



Light Blue
LBL



Sweet Pink
SPK

♂ only for men | ♀ only for women



SLUB
YARN

NO LABEL
IN COLLAR

NORMAL FIT

SLUB
YARN

NO LABEL
IN COLLAR

NORMAL FIT



Fashionable slub yarn
for a texturised look.

ST9410 · S-2XL · 140 g/m² · 24

ST9510 · S-XL · 140 g/m² · 24

Shawn Slub V-neck

for men

Sharon Slub V-neck

for women

100% ring-spun cotton, slub yarn; single jersey · slub yarn for a texturised look, hem and sleeve hems with grain stitches, side seams, small size label in the collar, care label in the side seam · **Men:** neck drop with binding · **Women:** reinforced shoulder seams, slim rib collar, wide neck drop, taped shoulder to shoulder

-  White
WHI
-  Black Opal
BLO
-  True Blue
TUB
-  Crimson Red
CSR
-  Bahama Green
BAH
-  Slate Grey
SLG
-  ♂ only for men

TANK TOPS

RING-SPUN
COTTON

TEAR
AWAY
LABEL

NO LABEL
IN COLLAR

BODY FIT



ST2810 · S-2XL · 160 g/m² · 📦 24

Tank Top

for men

100% ring-spun cotton; single jersey (GYH: 85% cotton, 15% viscose) · neck drop and armholes with binding, side seams, premium woven size label in the collar, tear-away care label in the side seam



NEW



Modern, body fit style
with side seams.

RING-SPUN
COTTON

RING-SPUN
COTTON

Tank top for men
and women with a
classic, regular fit.

NORMAL FIT

NORMAL FIT

ST2800 · S-2XL · 155 g/m² · 96

ST2900 · S-XL · 155 g/m² · 96

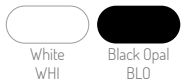
Classic Tank Top

for men

Classic Tank Top

for women

100% ring-spun cotton; single jersey · neck drop and armholes with binding, size and care label in the collar · **Men:** tubular fabric · **Women:** side seams



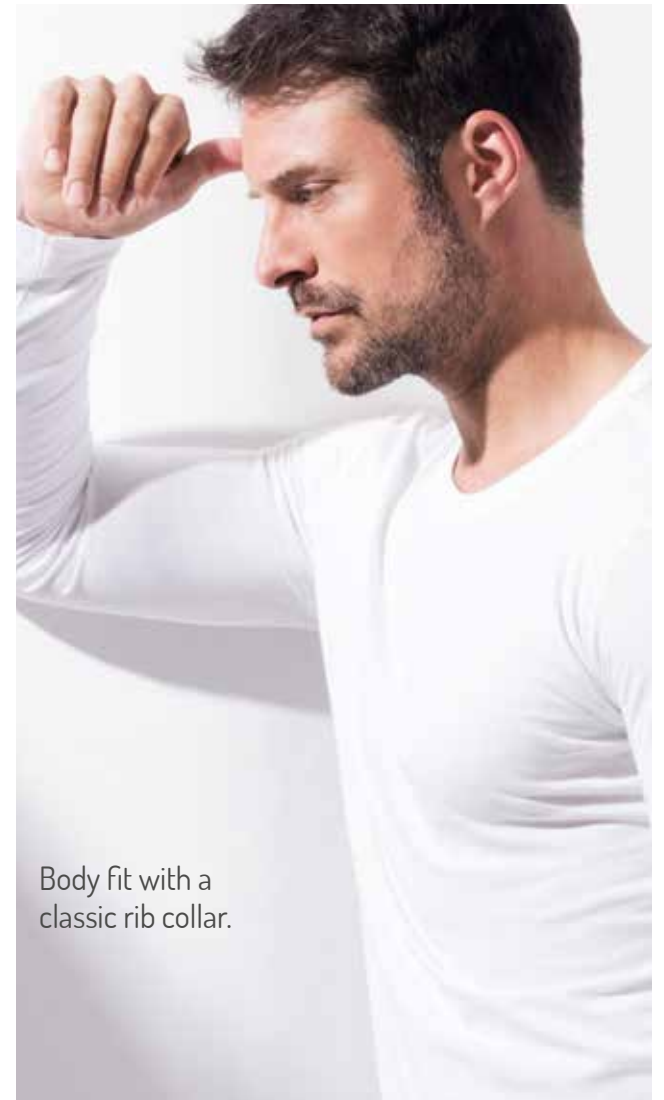
LONG SLEEVES



RING-SPUN
COTTON

NO LABEL
IN COLLAR

BODY FIT



Body fit with a
classic rib collar.

ST9040 · S-XL · 160 g/m² · 📦 24

Morgan Long Sleeve

for men

100% ring-spun cotton; single jersey · collar with rib binding, side seams, small size label in the collar, care label in the side seam



White
WHI



Black Opal
BLO



Slate Grey
SLG



Marina Blue
MAB

COMBED
COTTONNO LABEL
IN COLLAR

BODY FIT

ST9720 · S-XL · 170 g/m² · 24

Claire V-neck Long Sleeve

for women

95% ring-spun combed cotton, 5% elastane; single jersey "full feeder" (GYH: 82% cotton, 14% viscose, 4% elastane) • reinforced shoulder seams, self-fabric collar, wide neck drop, contrast neck tape, side seams, small size label in the collar, care label in the side seam

COMBED
COTTONNO LABEL
IN COLLAR

BODY FIT

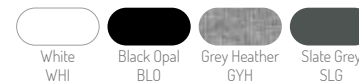
Stretchy, combed
cotton with elastane
and a modern
body-hugging fit.

ST9620 · S-2XL · 170 g/m² · 24

Clive Long Sleeve

for men

95% ring-spun combed cotton, 5% elastane; single jersey "full feeder" (GYH: 82% cotton, 14% viscose, 4% elastane) • reinforced shoulder seams, self-fabric collar, contrast neck tape, side seams, small size label in the collar, care label in the side seam



SLUB
YARN

NO LABEL
IN COLLAR

NORMAL FIT



SLUB
YARN

NO LABEL
IN COLLAR

NORMAL FIT



Fashionable structured slub material
with metal buttons.

ST9460 · S-2XL · 140 g/m² · 24

Shawn Henley Long Sleeve

for men

100% ring-spun cotton, slub yarn; single jersey · slub yarn for a texturised look, zigzag stitches on seams, rib collar, 3 metal buttons (nickel-free), neck tape, side seams, small size label in the collar, care label in the side seam · **Men:** wide placket, front yoke · **Women:** narrow placket

ST9580 · S-XL · 140 g/m² · 24

Sharon Henley Long Sleeve

for women



White
WHI



Black Opal
BLO



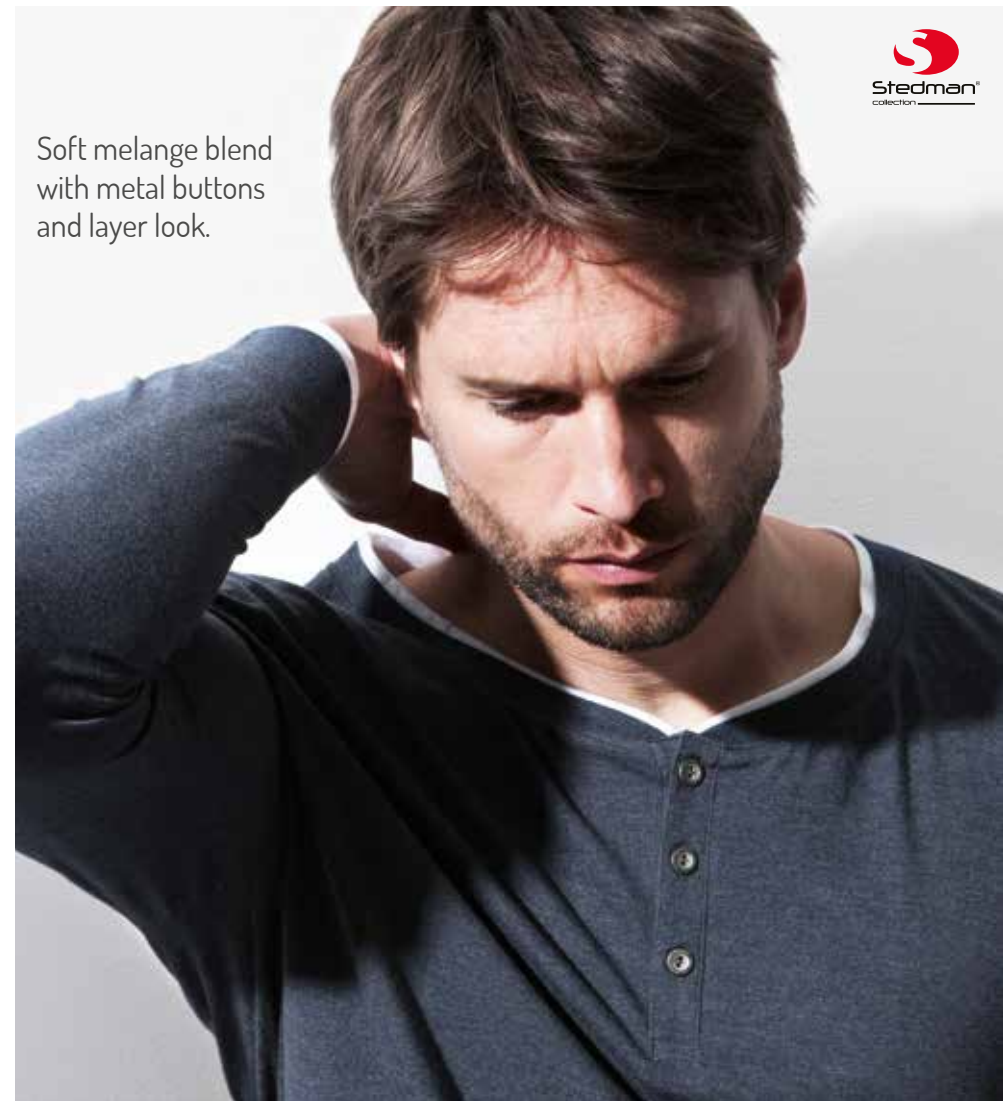
Slate Grey
SLG

♂ only for men

COMBED
COTTON

NO LABEL
IN COLLAR

NORMAL FIT



Stedman
collection

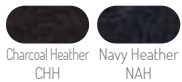
Soft melange blend
with metal buttons
and layer look.

ST9860 · S-2XL · 160 g/m² · 24

Luke Henley Long Sleeve

for men

60% ring-spun combed cotton, 40% polyester; melange, single jersey · white double layer on collar, sleeves and hem, half-moon, heathered look, rib collar, 3 metal buttons (nickel-free), self-fabric cuffs, decor neck tape, side seams, small size label in the collar, care label in the side seam



Charcoal Heather CHH
Navy Heather NAH

RING-SPUN
COTTON

NORMAL FIT

Classic long sleeve
made of durable
ring-spun cotton.



ST2500 · S-2XL · 155 g/m² · 96

Classic-T Long Sleeve

for men

100% ring-spun cotton; single jersey (GYH: 85% cotton, 15% viscose) · no cuffs on sleeves, taped shoulder to shoulder, tubular fabric, size and care label in the collar



RING-SPUN
COTTON



NORMAL FIT

The popular
heavyweight long
sleeve for more
warmth.

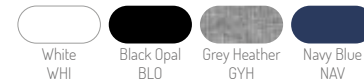


ST2130 · S-2XL · 185 g/m² · 96

Comfort-T 185 Long Sleeve

for men

100% ring-spun cotton; single jersey (GYH: 85% cotton, 15% viscose) · no cuffs on sleeves, taped shoulder to shoulder, tubular fabric, size and care label in the collar





SILKY
VISCOSE

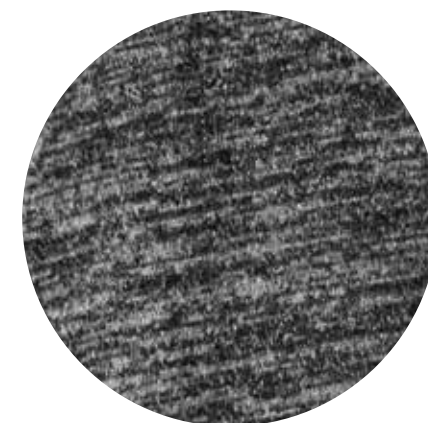
NO LABEL
IN COLLAR

SILKY
VISCOSE

NO LABEL
IN COLLAR

NORMAL FIT

NORMAL FIT



Modern knit fabric with viscose for an elegant, flattering silhouette.

ST9180 · S-XL · 210 g/m² · 24

ST9080 · S-2XL · 210 g/m² · 24

Knit Long Sleeve

for women

Knit Long Sleeve

for men

58% polyester, 37% viscose, 5% elastane · brushed outside, self-fabric collar, neck tape, side seams, small size label in the collar, care label in the side seam



Light Grey
Melange LGM

Dark Grey
Melange DGM

Marina Blue
Melange MBM

POLO SHIRTS



ST9050 · S-2XL · 225 g/m² · 📦 24

Henry Polo

for men

100% ring-spun combed cotton; true piqué · high-quality cotton piqué fabric, rib collar, 2 tone-on-tone buttons, contrast herringbone tape at neck and side seam slits, cuffs on sleeves, side seams with slits, small size label in the collar, care label in the side seam



Heavyweight, premium piqué made of combed cotton with side seam slits.

COMBED COTTON

TRUE PIQUÉ

NO LABEL IN COLLAR

COMBED COTTON

TRUE PIQUÉ

NO LABEL IN COLLAR

High-quality, combed cotton piqué for a soft and smooth feel.

NORMAL FIT

NORMAL FIT

ST9150 · S-XL · 170 g/m² · 24

ST9060 · S-2XL · 180 g/m² · 24

Hanna Polo

for women

100% ring-spun combed cotton; true piqué (GYH: 85% cotton, 15% viscose) • high-quality cotton piqué fabric, contrast herringbone neck tape, side seams, small size label in the collar, care label in the side seam

Men: rib collar and cuffs, 3 tone-on-tone buttons • **Women:** 5 tone-on-tone buttons, narrow placket, no cuffs on sleeves

Harper Polo

for men



♂ only for men | ♀ only for women

RING-SPUN
COTTON

RING-SPUN
COTTON

NORMAL FIT

NORMAL FIT

ST3000 · S-3XL · 170 g/m² · 48

ST3100 · S-2XL · 170 g/m² · 48

Polo
for men

Polo
for women

100% ring-spun cotton; single jersey, piqué look (GYH: 85% cotton, 15% viscose) · no cuffs on sleeves, neck tape, side seams, size and care label in the collar · **Men:** 2 horn-look buttons · **Women:** 2 tone-on-tone buttons

Men's size 3XL only in: White, Black Opal, Navy Blue, Scarlet Red · Women's size 2XL only in: White, Black Opal, Navy Blue



White
WHI



Black Opal
BLO



Grey Heather
GYH



Navy Blue
NAV



Bright Royal
BRR



Ocean Blue
OCB



Light Blue
LBL



Burgundy Red
BGR



Scarlet Red
SRE



Brilliant Orange
BOR



Yellow
YEL



Bright Lime
BLI



Kiwi Green
KIW



Blue Midnight
BLM



Deep Berry
DBY



Orange
ORA

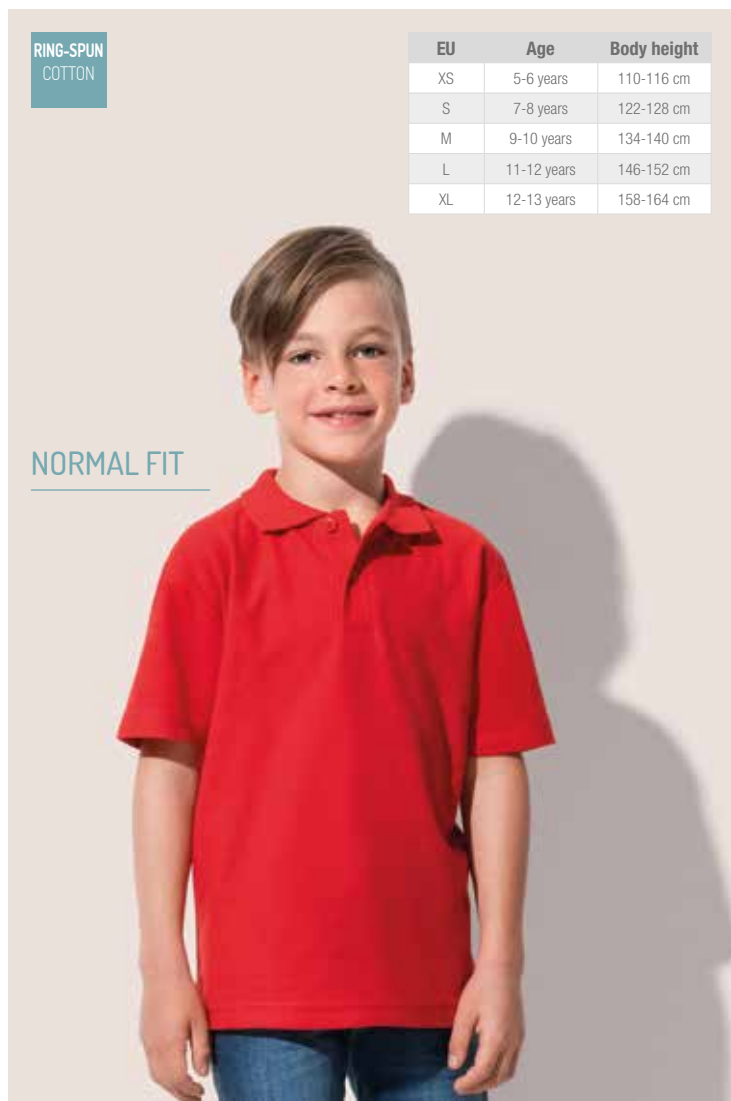


Bottle Green
BOG



Sweet Pink
SPK

♂ only for men | ♀ only for women

RING-SPUN
COTTON

EU	Age	Body height
XS	5-6 years	110-116 cm
S	7-8 years	122-128 cm
M	9-10 years	134-140 cm
L	11-12 years	146-152 cm
XL	12-13 years	158-164 cm

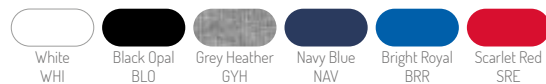
NORMAL FIT

ST3200 · XS-XL (110-164) · 170 g/m² · 48

Polo Kids

for children

100% ring-spun cotton; single jersey, piqué look (GYH: 85% cotton, 15% viscose) · 2 tone-on-tone buttons, no cuffs on sleeves, neck tape, side seams, size and care label in the collar

RING-SPUN
COTTON

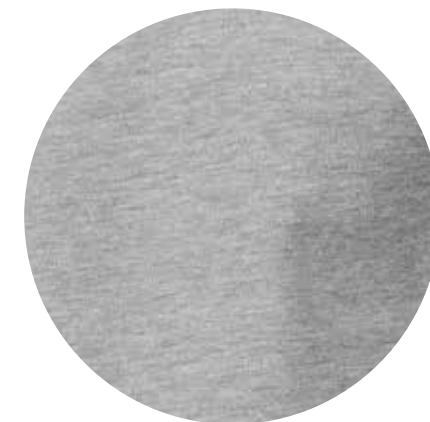
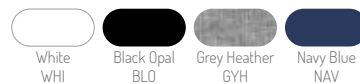
NORMAL FIT

ST3400 · S-2XL · 170 g/m² · 48

Polo Long Sleeve

for men

100% ring-spun cotton; single jersey, piqué look (GYH: 85% cotton, 15% viscose) · 3 tone-on-tone buttons, cuffs on sleeves, neck tape, side seams, size and care label in the collar



Soft, single jersey cotton
with rib collar and a
pleasing piqué look.

UNDER-WEAR

Soft and sleek
cotton-elastane-blend
with elastic waistband
and supreme comfort.



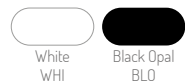


ST9691 · S-2XL · 195 g/m² · 📦 12

Dexter Boxers

for men

92% ring-spun combed cotton, 8% elastane; single jersey "full feeder" · 2-pack, elastic waistband with "Stedman®" wordmark



ST9692 · S-2XL · 195 g/m² · 📦 12

Dexter Briefs

for men

92% ring-spun combed cotton, 8% elastane; single jersey "full feeder" · 2-pack, elastic waistband with "Stedman®" wordmark





Stedman®
collection

Stedman® Sweat Range

The perfect choice for athletic as well as casual outfits:
The Stedman® sweat range includes sweatshirts,
hoodies, sweat jackets and -pants, made of soft,
high-quality cotton-blends.

Recycled Unisex Sweat Hoodie
(page 64)

Recycled Unisex Sweatpants
(page 65)



SWEAT SHIRTS



ST5620 · S-2XL · 280 g/m² · 📦 24

Sweatshirt

for men

80% ring-spun cotton, 20% polyester (GYH: 70% cotton, 30% polyester) · brushed inside, 100% cotton surface, decorative flatlock seams, collar with rib binding (with elastane), wide rib cuffs and waistband with elastane, side panels, small size label in the collar, care label in the side panel



Soft cotton-blend with a modern and sporty design. Decorative flatlock seams and collar with premium rib binding.

NEW
SIZES

NEW
COLOUR

RING-SPUN
COTTON

BRUSHED
INSIDE

Durable cotton-blend.
Midweight sweatshirt
now as Unisex style
from XS to 3XL.

NORMAL FIT

NORMAL FIT



ST4000 · XS-3XL · 280 g/m² · 📦 36 (XS, 3XL: 24)

Unisex Sweatshirt

for men & women

80% ring-spun cotton, 20% polyester (GYH: 70% cotton, 20% polyester, 10% viscose) · brushed inside, 100% cotton surface, elastic cuffs and waistband, side seams, size and care label in the collar



SWEAT HOODIES

RING-SPUN
COTTON

BRUSHED
INSIDE

NO LABEL
IN COLLAR

NORMAL FIT

NORMAL FIT



Lightweight with comfort – great for any season! No front pouch pocket allows the entire front panel to be decorated.

ST4200 · XS-4XL · 190 g/m² · 📦 24

Unisex Hooded Sweatshirt

for men & women

100% ring-spun cotton · lightweight with comfort, great for any season, brushed inside, tone-on-tone cord, raglan sleeves, self-fabric cuffs and waistband, side seams, small size label in the collar, care label in the side seam

Size 3-4XL only in: Black Opal, Real Grey, Navy Blue



RING-SPUN
COTTONBRUSHED
INSIDERING-SPUN
COTTONBRUSHED
INSIDE

NORMAL FIT

NORMAL FIT

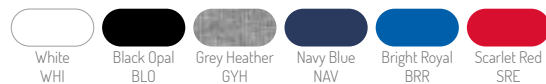
Durable cotton-blend. Midweight hooded sweatshirt with kangaroo pocket.

ST4110 · S-XL · 280 g/m² ·  36ST4100 · S-3XL · 280 g/m² ·  36

Hooded Sweatshirt

for women

80% ring-spun cotton, 20% polyester (GYH: 70% cotton, 20% polyester, 10% viscose) - brushed inside, 100% cotton surface, tone-on-tone cord, kangaroo pocket, elastic cuffs and waistband, herringbone neck tape, side seams, size and care label in the collar

White
WHIBlack Opal
BLOGrey Heather
GYHNavy Blue
NAVBright Royal
BRRScarlet Red
SRE

Hooded Sweatshirt

for men

RING-SPUN
COTTON

BRUSHED
INSIDE

NO LABEL
IN COLLAR

NORMAL FIT



RING-SPUN
COTTON

BRUSHED
INSIDE

NO LABEL
IN COLLAR

Soft cotton-blend with a modern and sporty design. Premium double fabric hood and metal eyelets for drawcords.

NORMAL FIT



ST5600 · S-2XL · 280 g/m² · 24

ST5700 · S-XL · 280 g/m² · 24

Sweat Hoodie

for men

80% ring-spun cotton, 20% polyester (GYH: 70% cotton, 30% polyester) · brushed inside, 100% cotton surface, double fabric hood, metal eyelets for drawcord (nickel-free), wide drawcord with metal tips (nickel-free), decorative flatlock seams, kangaroo pocket, wide rib cuffs and waistband with elastane, neck tape, side seams, small size label in the collar, care label in the side seam

Sweat Hoodie

for women



♂ only for men | ♀ only for women

RING-SPUN
COTTONBRUSHED
INSIDENO LABEL
IN COLLAR

NORMAL FIT

RING-SPUN
COTTONBRUSHED
INSIDENO LABEL
IN COLLAR

NORMAL FIT

Soft cotton-blend with a modern and sporty design. Tone-on-tone zipper with metal puller.

ST5610 · S-2XL · 280 g/m² · 24ST5710 · S-XL · 280 g/m² · 24

Sweat Jacket

for men

80% ring-spun cotton, 20% polyester (GYH: 70% cotton, 30% polyester) · brushed inside, 100% cotton surface, double fabric hood, metal eyelets for drawcord (nickel-free), wide drawcord with metal tips (nickel-free), decorative flatlock seams, kangaroo pocket, tone-on-tone zipper with metal puller (nickel-free), wide rib cuffs and waistband with elastane, neck tape, side seams, small size label in the collar, care label in the side seam

Sweat Jacket

for women



♀ only for women

RECYCLED MATERIAL



6 BOTTLES PER HOODIE

MADE FROM RECYCLED PLASTIC BOTTLES.



NEW

Eco-friendly made from recycled material. Gender-neutral style with side seam pockets.

NORMAL FIT



NORMAL FIT

ST5630 · XS-3XL · 280 g/m² · 📦 24

Recycled Unisex Sweat Hoodie

for men & women

80% ring-spun cotton, 20% recycled polyester (GYH: 70% cotton, 30% recycled polyester) · eco-friendly functional fabric, made from recycled plastic bottles (6 per hoodie), matching pants available, brushed inside, 100% cotton surface, side seam pockets (not sewn into waistband for full-surface decoration), double fabric hood with tone-on-tone drawcord, metal eyelets for drawcord (nickel-free), wide rib cuffs and waistband, neck tape, side seams, premium woven size label in the collar, tear-away care label in the side seam



NEW

Eco-friendly, gender-neutral style made from recycled material. Side pockets with zippers.

NORMAL FIT



NORMAL FIT



RECYCLED MATERIAL



6 BOTTLES PER PANTS

MADE FROM RECYCLED PLASTIC BOTTLES.

ST5650 · XS-2XL · 280 g/m² · 📦 24

Recycled Unisex Sweatpants

for men & women

80% ring-spun cotton, 20% recycled polyester (GYH: 70% cotton, 30% recycled polyester) • eco-friendly functional fabric, made from recycled plastic bottles (6 per pants), matching hoodie available, brushed inside, 100% cotton surface, right back pocket, side pockets with metal zippers (nickel-free), self-fabric waistband with tone-on-tone drawcord, wide rib cuffs, premium woven size label in the waistband, tear-away care label in the waistband





Stedman®
collection

Stedman® Sports & More

Fantastic for sportive indoor and outdoor activities. Our sports line includes innovative workout clothes made of high-quality, moisture-wicking functional fabrics.

Recycled Sports-T Reflect
(page 71)

3/4 Sports Tights
(page 76)





RECYCLED MATERIAL



**4 BOTTLES
PER T-SHIRT**

MADE FROM RECYCLED PLASTIC BOTTLES.

Eco-friendly from recycled material. Especially flattering shape for ladies with overcut sleeves and a rounded hem.



NORMAL FIT



ST8830 · S-2XL · 125 g/m² · 24

Recycled Sports-T Move

for men

100% ACTIVE-DRY® polyester (50% recycled) • eco-friendly functional fabric, made from recycled plastic bottles (4 per T-shirt), heathered look, self-fabric collar, neck tape, side seams, premium woven size label in the collar, tear-away care label in the side seam • **Women:** rounded hem, overcut sleeves



Grey Heather
GYH



Denim Heather
DMH



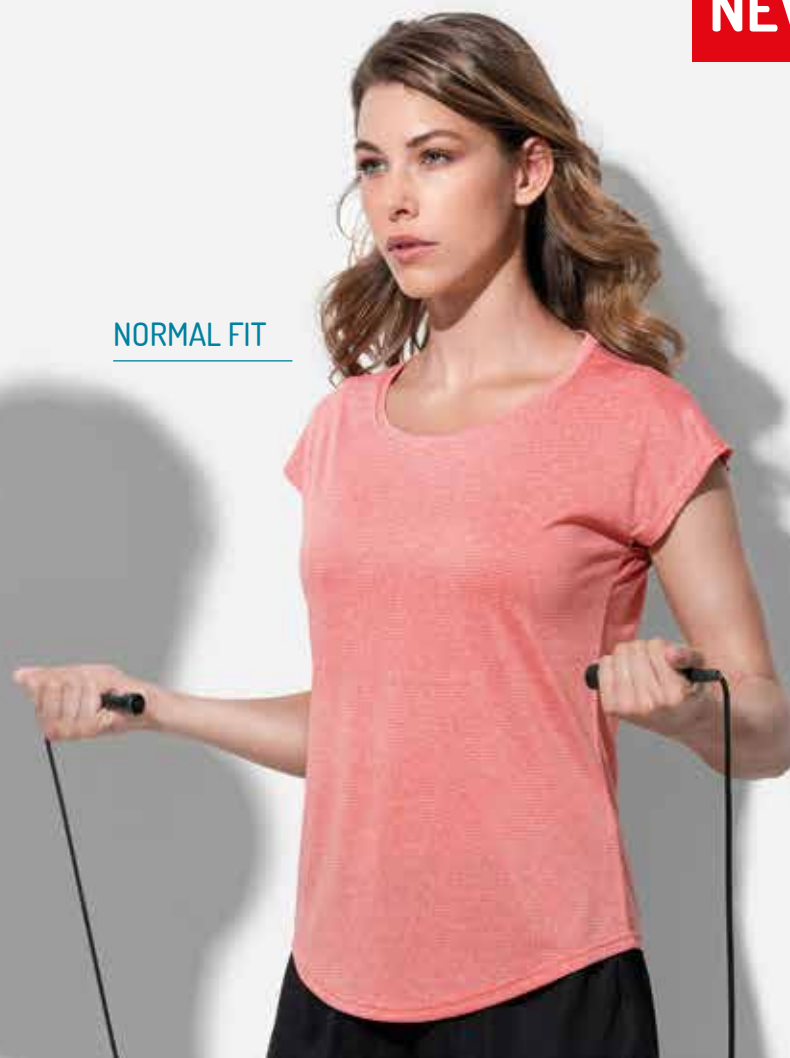
Coral Heather
CLH

♀ only for women

NEW



NORMAL FIT



ST8930 · S-XL · 125 g/m² · 24

Recycled Sports-T Move

for women



RECYCLED MATERIAL



**4 BOTTLES
PER T-SHIRT**

MADE FROM RECYCLED PLASTIC BOTTLES.

Eco-friendly from recycled material. Super soft with reflecting tapes for great visibility even in low light conditions.



NEW



Reflecting tape on front and back.



BODY FIT

BODY FIT



ST8840 · S-2XL · 190 g/m² · 24

ST8940 · S-XL · 190 g/m² · 24

Recycled Sports-T Reflect

for men

Recycled Sports-T Reflect

for women

90% ACTIVE-DRY® polyester (50% recycled), 10% elastane • eco-friendly functional fabric, made from recycled plastic bottles (4 per T-shirt), super soft ACTIVE-DRY® fabric, heathered look, reflecting tape (front and back) for great visibility, contrast flatlock seams, self-fabric collar, side seams, premium woven size label in the collar, tear-away care label in the side seam



Grey Heather
GYH



Blue Heather
BLH



RECYCLED MATERIAL



**4 BOTTLES
PER T-SHIRT**

MADE FROM RECYCLED PLASTIC BOTTLES.

Eco-friendly from recycled material. Super stretchy with heathered elements.

NEW



TEAR AWAY LABEL

NO LABEL IN COLLAR

BODY FIT



BODY FIT



TEAR AWAY LABEL

NO LABEL IN COLLAR



Contrast shoulder panels for men.

ST8850 · S-2XL · 160 g/m² · 24

Recycled Sports-T Race

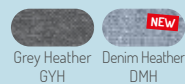
for men

90% ACTIVE-DRY® polyester (50% recycled), 10% elastane • eco-friendly functional fabric, made from recycled plastic bottles (4 per T-shirt), heathered look, decorative flatlock seams, self-fabric collar, neck tape, premium woven size label in the collar, tear-away care label in the side seam • **Men:** contrast side and shoulder panels • **Women:** contrast side panels

ST8950 · S-XL · 160 g/m² · 24

Recycled Sports-T Race

for women

Grey Heather
GYHDenim Heather
DMH

RECYCLED MATERIAL



**8 BOTTLES
PER JACKET**

MADE FROM RECYCLED PLASTIC BOTTLES.

Eco-friendly from recycled material. Modern styles for both athletic and casual wear.





TEAR
AWAY
LABEL

NO LABEL
IN COLLAR

NORMAL FIT



ST5840 · S-2XL · 300 g/m² · 10

Recycled Scuba Jacket

for men

BLO: 94% polyester (24% recycled), 6% elastane; ANH: 81% polyester (28% recycled), 13% viscose, 6% elastane · eco-friendly functional fabric, made from recycled plastic bottles (8 per jacket), metal eyelets for drawcord (nickel-free), scuba hood with elastic binding and 2-colour drawcord, 2 side pockets with hidden zippers, zipper with metal puller (nickel-free), decorative flatlock seams, self-fabric cuffs, neck tape, side seams, premium woven size label in the collar, tear-away care label in the side seam · **Women:** elastic binding at hem



Black Opal
BLO



Antra Heather
ANH

NEW



TEAR
AWAY
LABEL

NO LABEL
IN COLLAR

NORMAL FIT



ST5940 · XS-XL · 300 g/m² · 10

Recycled Scuba Jacket

for women

NEW



ST8320 · S-XL · 300 g/m² · 📦 24

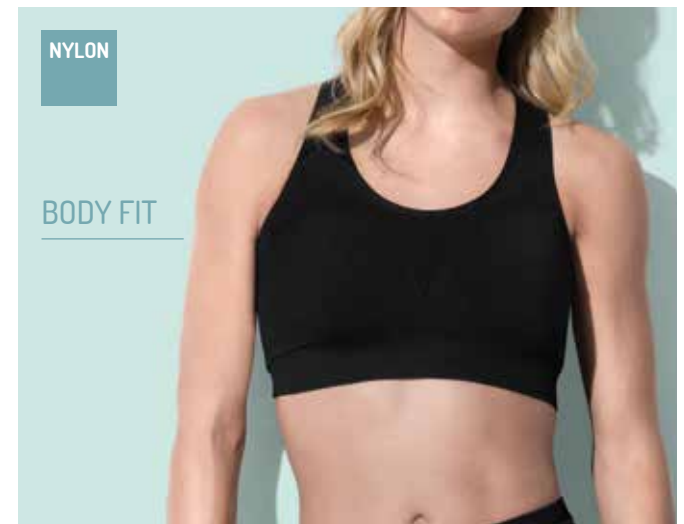
3/4 Sports Tights

for women

90% nylon, 10% elastane · wide rib waistband, contrast flatlock side seams, size and care label in the waistband



Black Opal
BLO



ST8330 · S-XL · 300 g/m² · 📦 24

Sports Bra

for women

90% nylon, 10% elastane · seamless construction without underwire, stretchy double-fabric material, elastic rib chest band, racerback, removable cup padding, size and care label in the collar



Black Opal
BLO



Stretchy double-fabric material.
Optimum support for high-intensity workouts.



Stretchy fabric with a wide rib
waistband. Sporty contrast
stripes on the sides.

NYLON

NYLON

BODY FIT

BODY FIT



ST8810 · S-2XL · 180 g/m² · 48

ST8910 · S-XL · 180 g/m² · 48

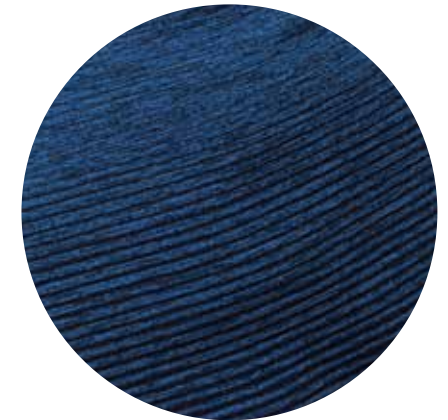
Seamless Raglan Flow

for men

Seamless Raglan Flow

for women

75% nylon, 25% ACTIVE-DRY® polyester · multi-colour gradient pattern, decorative flatlock seams, self-fabric collar, raglan sleeves, tubular fabric, size and care label in the collar



Durable, quick-drying fabric with nylon. Extra high elasticity and a multi-colour gradient pattern.



Light Grey

Transition LGT

Dark Grey

Transition DGT

Blue Transition

BLT



NYLON

NYLON

BODY FIT

BODY FIT

ST8820 · S-XL · 180 g/m² · 24ST8920 · S-XL · 180 g/m² · 24

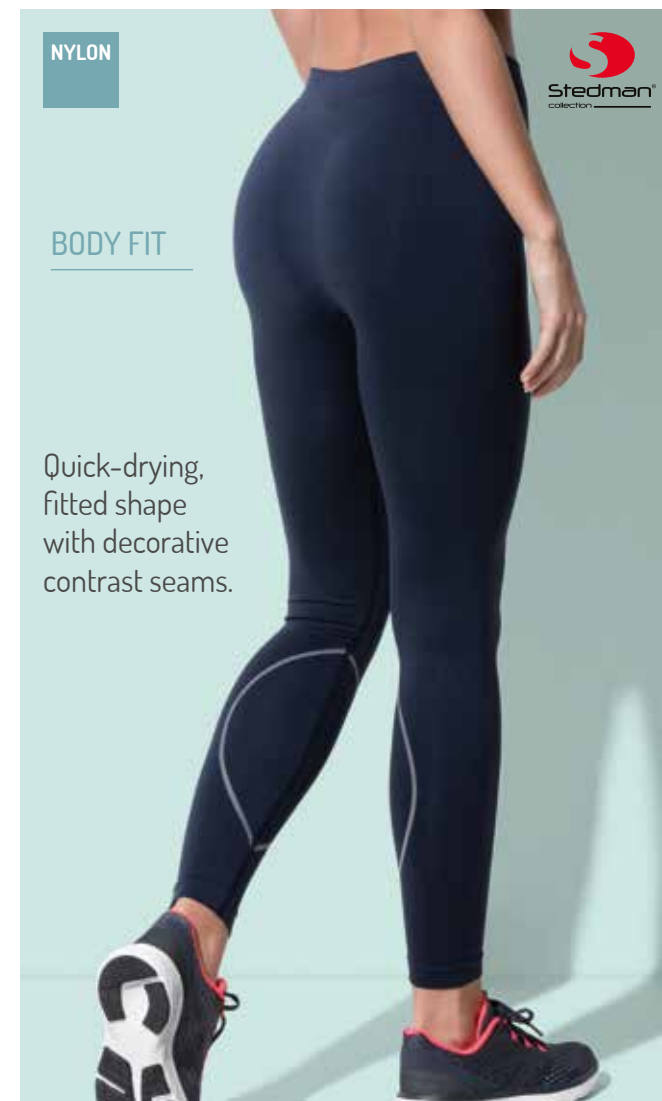
Seamless Jacket

for men

75% nylon, 25% ACTIVE-DRY® polyester · multi-colour gradient pattern, scuba hood with centre panel, zipper with metal puller (nickel-free), decorative flatlock seams, raglan sleeves, self-fabric cuffs and waistband, thumb holes, size and care label in the collar



Light Grey Transition LGT
Dark Grey Transition DGT
Blue Transition BLT



NYLON

BODY FIT

Quick-drying,
fitted shape
with decorative
contrast seams.

ST8990 · S-XL · 300 g/m² · 24

Seamless Tights

for women

82% nylon, 18% elastane · decorative contrast seams, flatlock inner leg seam, size and care label in the waistband



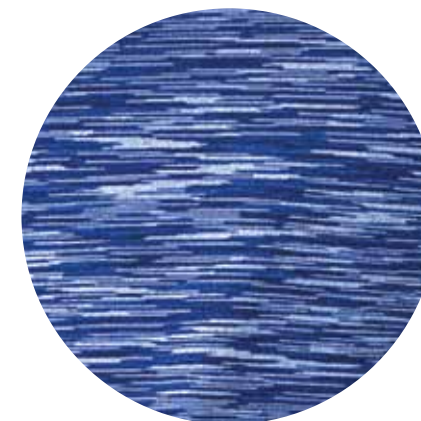
Black Opal BLO
Grey Steel GRS
Blue Midnight BLM

NYLON

NYLON

BODY FIT

BODY FIT



Stretchy, quick-drying fabric with nylon. Striking 2-colour pattern with texturised sections.

ST8800 · S-2XL · 140 g/m² · 48

ST8900 · S-XL · 140 g/m² · 48

Seamless Raglan

for men

Seamless Raglan

for women

58% ACTIVE-DRY® polyester, 42% nylon; jacquard · 2-colour pattern, decorative flatlock seams, self-fabric collar, raglan sleeves, tubular fabric, size and care label in the collar



Black Opal Melange B0M King Blue Melange KBM Kiwi Melange KWM



SLEEK MESH
NO LABEL IN COLLAR

SLEEK MESH
NO LABEL IN COLLAR

NORMAL FIT

NORMAL FIT



Our popular Active 140 mesh styles with a sleek surface.

ST8030 · S-2XL · 140 g/m² · 24

ST8130 · S-XL · 140 g/m² · 24

Active 140 Team Raglan

for men

Active 140 Team Raglan

for women

100% ACTIVE-DRY® polyester; sleek mesh • sleek surface, stretchy fabric, contrast raglan seams, decorative flatlock seams, raglan sleeves, contrast neck tape, side seams, small size label in the collar, care label in the side seam





MESH

NO LABEL
IN COLLAR

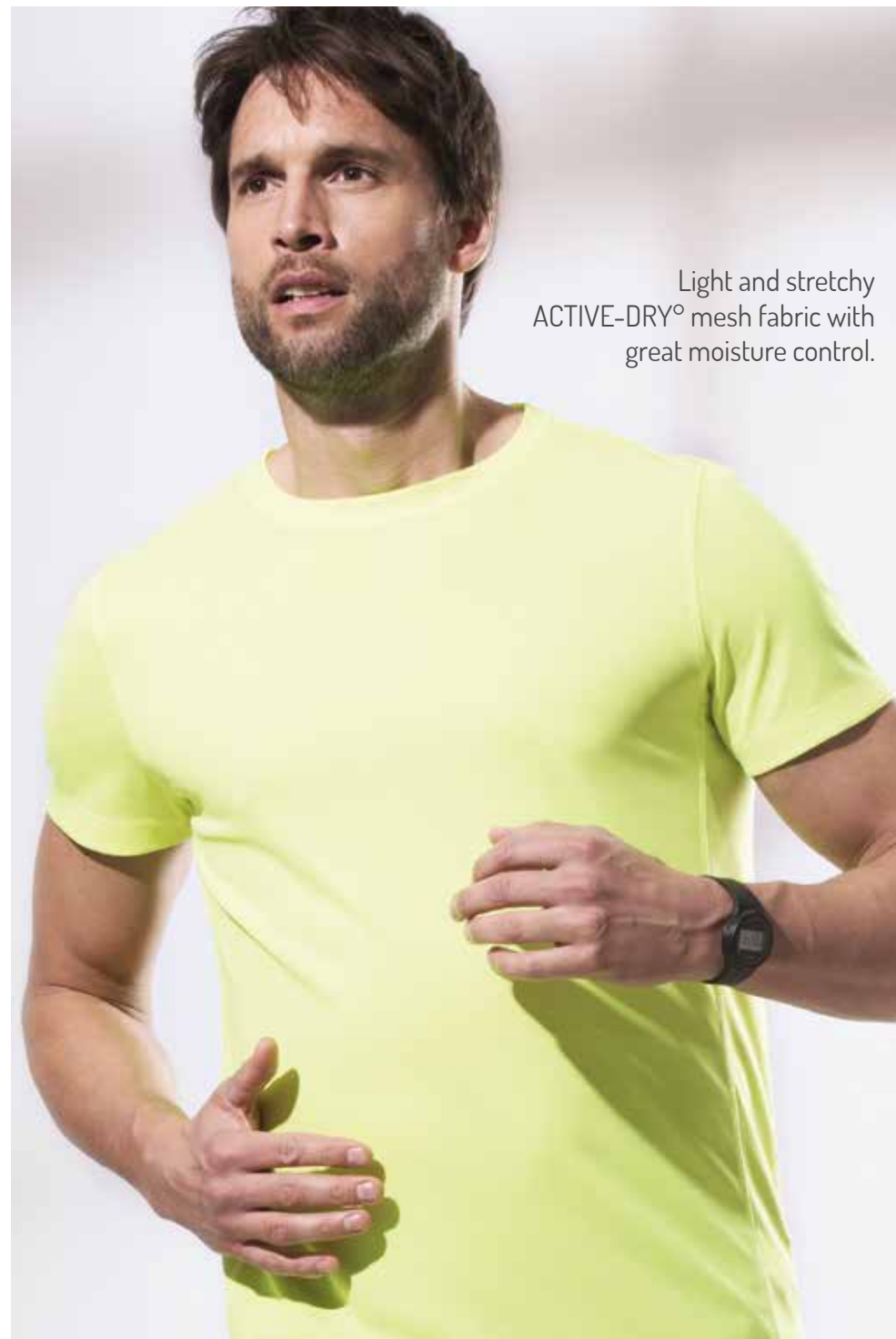
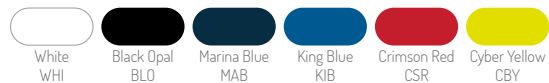
NORMAL FIT

ST8400 · S-2XL · 140 g/m² · 24

Active 140 Crew Neck

for men

100% ACTIVE-DRY® polyester; bird-eyelet mesh · stretchy fabric, decorative flatlock seams, set-in sleeves, contrast neck tape (CBY), side panels, small size label in the collar, care label in the side panel



Light and stretchy
ACTIVE-DRY® mesh fabric with
great moisture control.



NO LABEL
IN COLLAR

NORMAL FIT



NO LABEL
IN COLLAR

NORMAL FIT



NO LABEL
IN COLLAR

NORMAL FIT

EU	Age	Body height
S	7-8 years	122-128 cm
M	9-10 years	134-140 cm
L	11-12 years	146-152 cm
XL	12-13 years	158-164 cm

ST8410 · S-2XL · 140 g/m² · 24

Active 140 Raglan

for men

ST8500 · S-XL · 140 g/m² · 24

Active 140 Raglan

for women

ST8570 · S-XL (122-164) · 140 g/m² · 24

Active 140 Raglan Kids

for children

100% ACTIVE-DRY® polyester; bird-eyelet mesh · stretchy fabric, decorative flatlock seams, raglan sleeves, contrast neck tape (CBY), side seams, small size label in the collar, care label in the side seam



White
WHI



Black Opal
BLO



Marina Blue
MAB



King Blue
KIB



Deep Lilac
DLC



Crimson Red
CSR



Cyber Yellow
CBY



Kiwi Green
KIW



ST8440 · S-2XL · 140 g/m² · 24

ST8540 · S-XL · 140 g/m² · 24

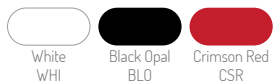
Active 140 Sleeveless

for men

Active 140 Tank

for women

100% ACTIVE-DRY® polyester; bird-eyelet mesh · stretchy fabric, neck drop and armholes with binding, small size label in the collar, care label in the side seam · **Men:** decorative flatlock seams, front yoke, side seams and side panels · **Women:** racerback, side seams



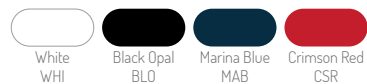


ST8450 · S-2XL · 140 g/m² ·  24

Active 140 Polo

for men

100% ACTIVE-DRY[®] polyester; bird-eyelet mesh • stretchy fabric, decorative flatlock seams, rib collar, 3 tone-on-tone buttons, no cuffs on sleeves, contrast neck tape (CBY), side seams, small size label in the collar, care label in the side seam

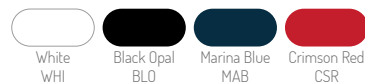


ST8420 · S-2XL · 140 g/m² ·  24

Active 140 Long Sleeve

for men

100% ACTIVE-DRY[®] polyester; bird-eyelet mesh • stretchy fabric, decorative flatlock seams, raglan sleeves, contrast neck tape (CBY), side seams, small size label in the collar, care label in the side seam



Light and stretchy
ACTIVE-DRY[®] mesh fabric with
great moisture control.



NO LABEL
IN COLLAR

NO LABEL
IN COLLAR

Tight knit, yet very elastic
and breathable fabric with
sleek surface.

BODY FIT

BODY FIT

ST8000 · S-2XL · 140 g/m² · 24

ST8100 · S-XL · 140 g/m² · 24

Sports-T

for men

100% ACTIVE-DRY® polyester; interlock · smooth and sleek fabric, small reflecting ACTIVE-DRY® logo on the back, decorative flatlock shoulder seams, self-fabric collar, neck tape, side seams, small size label in the collar, care label in the side seam

Sports-T

for women



♀ only for women



NEW

NO LABEL
IN COLLAR

TEAR
AWAY
LABEL

EU	Age	Body height
S	7-8 years	122-128 cm
M	9-10 years	134-140 cm
L	11-12 years	146-152 cm
XL	12-13 years	158-164 cm

NORMAL FIT

ST8170 · S-XL (122-164) · 140 g/m² · 24

Sports-T Kids

for children

100% ACTIVE-DRY® polyester; interlock · smooth and sleek fabric, self-fabric collar, neck tape, side seams, premium woven size label in the collar, tear-away care label in the side seam





ST8010 · S-2XL · 140 g/m² · 📦 24

ST8110 · S-XL · 140 g/m² · 📦 24

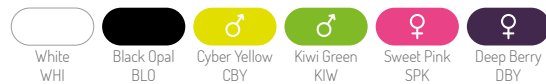
Sports Top

for men

100% ACTIVE-DRY® polyester; interlock · smooth and sleek fabric, small reflecting ACTIVE-DRY® logo on the back, neck drop and armholes with binding, side seams, small size label in the collar, care label in the side seam · **Women:** racerback

Sports Top

for women



♂ only for men | ♀ only for women





Quick-drying, breathable material. Sophisticated, subtle pattern made of multicoloured threads.



ST8020 · S-2XL · 140 g/m² · 📦 48

ST8120 · S-XL · 140 g/m² · 📦 48

Intense Tech

for men

100% ACTIVE-DRY® polyester; jacquard · heathered look, decorative flatlock shoulder seams, self-fabric collar, neck tape, side seams, small size label in the collar, care label in the side seam

Intense Tech

for women





Fine and smooth moisture-wicking fabric that feels like real cotton!

ST8700 · S-XL · 160 g/m² · 24

ST8600 · S-2XL · 160 g/m² · 24

Cotton Touch

for women

100% ACTIVE-DRY[®] polyester; single jersey, cotton touch · fine, smooth fabric that feels like cotton, small reflecting ACTIVE-DRY[®] logo on the back, decorative flatlock shoulder seams, neck tape, side seams, small size label in the collar, care label in the side seam

Cotton Touch

for men



♂ only for men

TRUE
PIQUÉ

NO LABEL
IN COLLAR

NORMAL FIT



High-quality piqué with great freedom of movement. Superior moisture and temperature control.

ST8050 · S-2XL · 180 g/m² ·  24

Piqué Polo

for men

100% ACTIVE-DRY® polyester; true piqué · high-quality polyester piqué fabric, rib collar and cuffs, 2 tone-on-tone buttons, contrast herringbone neck tape, side seams, small size label in the collar, care label in the side seam, washable at 60°C



White
WHI



Black Opal
BLO



Slate Grey
SLG



Hawaii Blue
HWB



Pepper Red
PER



Bahama Green
BAH





NO LABEL
IN COLLAR

BRUSHED
INSIDE

NORMAL FIT



NORMAL FIT



NO LABEL
IN COLLAR

BRUSHED
INSIDE

Light and breathable
melange fabric. Brushed
inside for a soft feel.

ST5930 · S-XL · 240 g/m² · 10

ST5830 · S-2XL · 240 g/m² · 10

Performance Jacket

for women

100% ACTIVE-DRY® polyester; melange · brushed inside, double fabric scuba hood with centre panel, metal eyelets for drawcord (nickel-free), wide drawcord in contrast colour, seams in contrast colour, 2 side pockets with mesh lining, storm flap, zipper in contrast colour, self-fabric cuffs and waistband, contrast neck tape, small size label in the collar, care label in the side seam · **Men:** shoulder applications with decorative stitches, raglan sleeves, side seams · **Women:** raglan sleeves with decorative applications, side seams and side panels


Performance Jacket

for men



♂ only for men | ♀ only for women





Power Fleece Jacket
(page 102)

Stedman® Jackets & Fleece

Modern looks for outdoor adventures or simply extra warmth. Our Jackets & Fleece line features an extensive fleece range, padded jackets and vests, quilted jackets as well as fashionable pilot and biker jackets.

Padded Jacket
(page 104)

RECYCLED MATERIAL



**16 BOTTLES
PER JACKET**

MADE FROM RECYCLED PLASTIC BOTTLES.

Eco-friendly from recycled material. Sporty, modern styles for outdoor activities.





TEAR
AWAY
LABEL

NO LABEL
IN COLLAR

BRUSHED
INSIDE



NORMAL FIT

NEW



TEAR
AWAY
LABEL

NO LABEL
IN COLLAR

BRUSHED
INSIDE



NORMAL FIT

ST5860 · S-2XL · 210 g/m² · 10

Recycled Fleece Jacket Hero

for men

100% polyester (60% recycled) · eco-friendly functional fabric, made from recycled plastic bottles (16 per jacket), brushed inside, scuba hood, zipper in contrast colour, decorative flatlock seams, 2 side pockets with contrast zippers, contrast elastic bindings at hood, sleeves and hem, neck tape, side seams, tear-away care label in the side seam, premium woven size label in the collar · **Men:** contrast chest pocket with zipper



Turquoise
TUO



Grey Steel
GRS



Sweet Pink
SPK

♂ only for men | ♀ only for women

ST5960 · XS-XL · 210 g/m² · 10

Recycled Fleece Jacket Hero

for women

NO LABEL
IN COLLAR

BRUSHED
INSIDE

NORMAL FIT



NO LABEL
IN COLLAR

BRUSHED
INSIDE

NORMAL FIT



ST5090 · S-2XL · 280 g/m² · 10

Striped Fleece Jacket

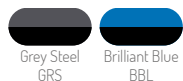
for men

100% polyester; knit fleece with anti-pilling treatment · warm, stretchy and durable fabric with a sophisticated knit look, brushed inside, knitted surface, zipper with metal puller (nickel-free), decorative flatlock seams, stand-up collar, 2 side pockets with zippers, elastic bindings at hem and sleeves, neck tape, side seams with front panels, small size label in the collar, care label in the side seam

ST5190 · S-XL · 280 g/m² · 10

Striped Fleece Jacket

for women



Grey Steel
GRS

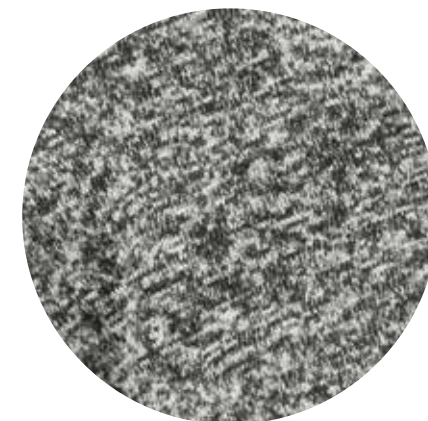
Brilliant Blue
BBL

NO LABEL
IN COLLARBRUSHED
INSIDE

NORMAL FIT

NO LABEL
IN COLLARBRUSHED
INSIDE

NORMAL FIT



Sophisticated knit surface. Warm,
stretchy and durable fabric.

ST5950 · S-XL · 280 g/m² · 10ST5850 · S-2XL · 280 g/m² · 10

Knit Fleece Jacket

for women

100% polyester; knit fleece with anti-pilling treatment · warm, stretchy and durable fabric with a sophisticated knit look, brushed inside, knitted surface, contrast herringbone neck tape, side seams with front panels, small size label in the collar, care label in the side seam · **Men:** zipper in contrast colour, decorative flatlock seams, stand-up collar, 2 pockets, self-fabric cuffs and waistband · **Women:** metal eyelets for drawcord (nickel-free), scuba hood, wide drawcord in contrast colour, 2 side pockets with contrast zippers and fabric pullers, contrast zipper with fabric puller, contrast elastic bindings at hood, sleeves and hem

Knit Fleece Jacket

for men



♀ only for women



Warm and soft with great heat-insulation at a light weight.



ST5010 · S-2XL · 220 g/m² · 24

ST5110 · S-XL · 220 g/m² · 24

Fleece Vest

for men

Fleece Vest

for women

100% polyester; micro fleece with anti-pilling treatment · warm and soft with great heat-insulating properties, breathable, both sides brushed, half-moon, stand-up collar, 2 pockets, front panels with pocket entry, tone-on-tone zipper with storm flap, armholes with elastic bindings, herringbone neck tape, side seams, small size label in the collar, care label in the side seam · **Men:** adjustable hem



♂ only for men | ♀ only for women

NO LABEL
IN COLLARBOTH SIDES
BRUSHED

NORMAL FIT

NO LABEL
IN COLLARBOTH SIDES
BRUSHED

NORMAL FIT

ST5030 · S-2XL · 220 g/m² · 24ST5100 · S-XL · 220 g/m² · 24

Fleece Jacket

for men

100% polyester; micro fleece with anti-pilling treatment · warm and soft with great heat-insulating properties, breathable, both sides brushed, half-moon, stand-up collar, 2 pockets, tone-on-tone zipper with storm flap, herringbone neck tape, small size label in the collar, care label in the side seam · **Men:** adjustable hem, side panels · **Women:** side seams and side panels (front and back)

NO LABEL
IN COLLARBOTH SIDES
BRUSHED

NORMAL FIT

EU	Age	Body height
S	7-8 years	122-128 cm
M	9-10 years	134-140 cm
L	11-12 years	146-152 cm
XL	12-13 years	158-164 cm

ST5170 · S-XL (122-164) · 220 g/m² · 24

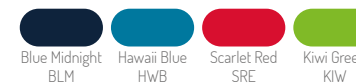
Fleece Jacket Kids

for children

100% polyester; micro fleece with anti-pilling treatment · warm and soft with great heat-insulating properties, breathable, both sides brushed, half-moon, stand-up collar, 2 pockets, tone-on-tone zipper with storm flap, herringbone neck tape, side seams, small size label in the collar, care label in the side seam



♂ only for men | ♀ only for women





ST5020 · S-2XL · 170 g/m² · 📦 24

Fleece Half-Zip

for men

100% polyester; micro fleece with anti-pilling treatment · warm and soft with great heat-insulating properties, breathable, brushed outside, half-moon, adjustable hem, stand-up collar, tone-on-tone half zipper with storm flap, herringbone neck tape, side seams, small size label in the collar, care label in the side seam



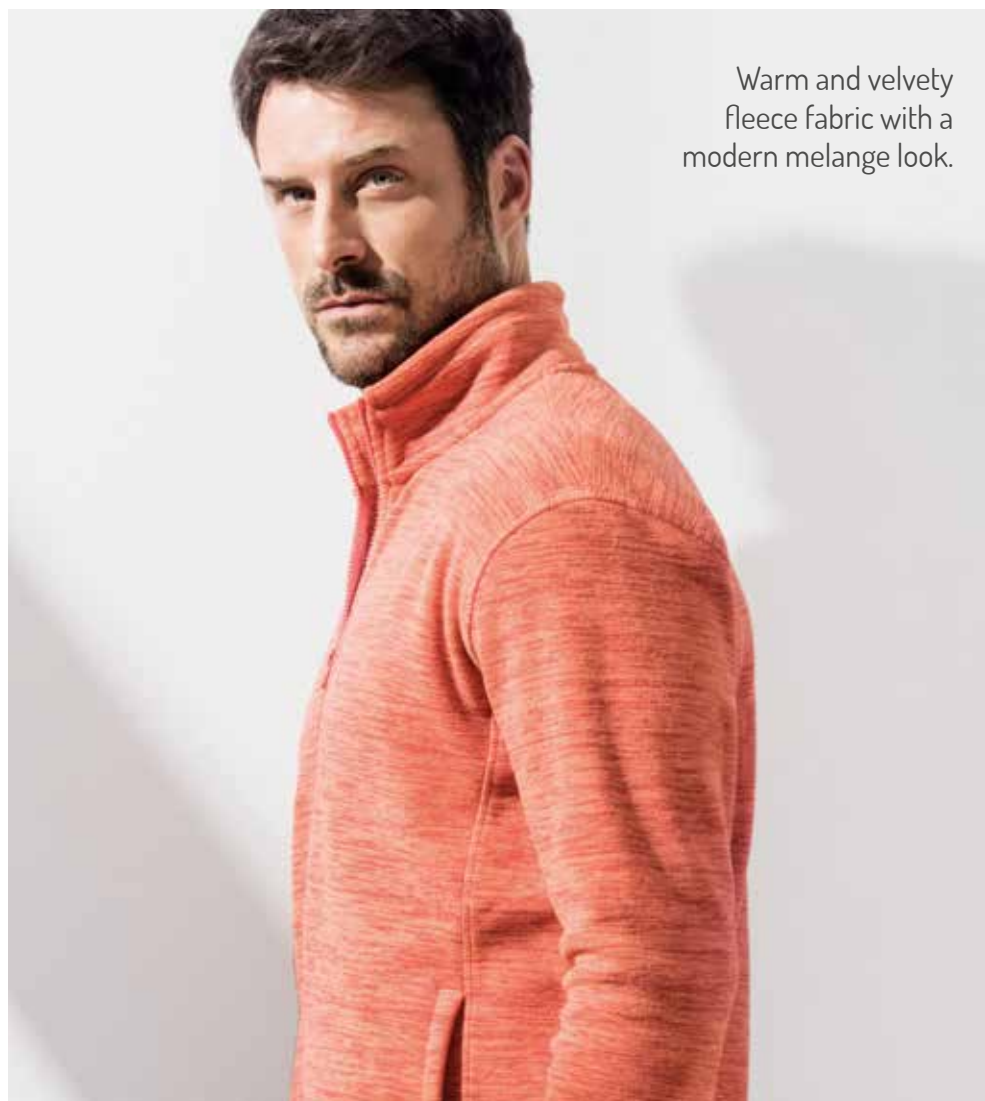
ST5080 · S-2XL · 220 g/m² · 📦 24

Hooded Fleece Jacket

for men

100% polyester; micro fleece with anti-pilling treatment · warm and soft with great heat-insulating properties, breathable, both sides brushed, half-moon, scuba hood with wide draw cord, adjustable hem, chest pocket with tone-on-tone zipper, 2 pockets, storm flap, tone-on-tone zipper with metal puller (nickel-free), herringbone neck tape, side panels, small size label in the collar, care label in the side seam





Warm and velvety
fleece fabric with a
modern melange look.



NO LABEL
IN COLLAR

BOTH SIDES
BRUSHED

Stedman[®]
collection

NORMAL FIT

ST5060 · S-2XL · 310 g/m² · 10

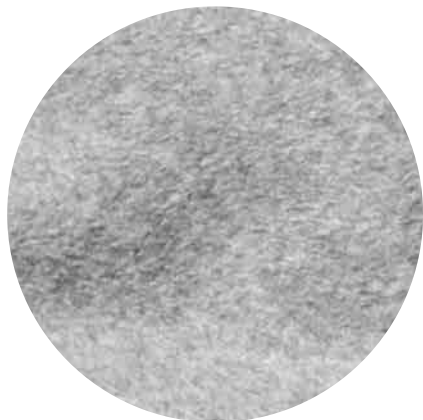
Melange Fleece Jacket

for men

100% polyester; melange fleece with anti-pilling treatment · warm and velvety fleece fabric with anti-pilling treatment, both sides brushed, half-moon, decorative flatlock seams, stand-up collar, front panels with pocket entry, tone-on-tone zipper with metal puller (nickel-free), hang loop, neck tape, side seams, small size label in the collar, care label in the side seam



Anthra Melange ANM Pumpkin Melange PPM Olive Melange OLM



Brushed on both sides for plush appearance. Warm feel, excellent heat-insulation and modern look.



ST5040 · S-2XL · 280 g/m² · 10

ST5120 · S-XL · 280 g/m² · 10

Power Fleece Jacket

for men

Power Fleece Jacket

for women

100% polyester; fleece with anti-pilling treatment · Power fleece, both sides brushed, fleece with anti-pilling treatment, scuba hood with centre panel, wide drawcord in contrast colour, contrast flatlock seams, 2 side pockets with contrast zippers, contrast zipper with storm flap, contrast elastic bindings at hood, sleeves and storm flap, raglan sleeves with shoulder yoke, contrast herringbone neck tape, small size label in the collar, care label in the side seam · **Men:** side seams · **Women:** side seams and side panels (front and back)



Grey Heather GYH Anthra Heather ANH

Power Fleece Jacket
(page 102)

Padded Jacket
(page 104)

Padded Jacket
(page 104)





NYLON

NO LABEL
IN COLLAR

NORMAL FIT

NORMAL FIT

NYLON

NO LABEL
IN COLLAR

ST5200 · S-2XL · 10

ST5300 · S-XL · 10

Padded Jacket

for men

Padded Jacket

for women

shell and lining: 100% nylon; filling: 100% polyester · excellent heat insulation at light weight, water-resistant, wind repellent, polyester filling, stand-up collar with zipper and inside hood with drawcord, 2 side pockets with contrast zippers, contrast zipper with storm flap, contrast elastic bindings at hem and sleeves, hang loop, small size label in the collar, care label in the side seam, LGY: zippers and bindings tone-on-tone · **Men:** side seams · **Women:** side seams with front panels



♂ only for men | ♀ only for women



NYLON

NO LABEL
IN COLLAR

NORMAL FIT

NYLON

NO LABEL
IN COLLAR

NORMAL FIT



Supreme warmth, water-repellent &
wind-resistant material.

ST5210 · S-2XL · 10

ST5310 · S-XL · 10

Padded Vest

for men

shell and lining: 100% nylon; filling: 100% polyester · excellent heat insulation at light weight, water-resistant, wind repellent, polyester filling, stand-up collar with zipper and inside hood with drawcord, 2 side pockets with contrast zippers, contrast zipper with storm flap, contrast elastic binding at hem, hang loop, small size label in the collar, care label in the side seam · **Men:** side seams · **Women:** side seams with front panels

Padded Vest

for women



♂ only for men | ♀ only for women

Black Opal
BLODark Blue
DABBordeaux
BOD

NO LABEL
IN COLLAR

NO LABEL
IN COLLAR

NORMAL FIT

NORMAL FIT



ST5230 · S-2XL · 250 g/m² · 10

ST5330 · S-XL · 250 g/m² · 10

Softest Shell Jacket

for men

94% polyester, 6% elastane · breathability 1.000 g/m², water resistance 2.000 mm, wind- and water-resistant TPU membrane, 4-way-stretch fabric bonded with mesh, features in contrast colour, metal ventilation eyelets under sleeves (nickel-free), adjustable hem, adjustable sleeve hems with hook and loop fastener, side and chest pockets with zipper, storm flap, hang loop, neck tape, small size label in the collar, care label in the side seam · **Men:** side seams · **Women:** side seams and side panels (front and back)



Lightweight, 4-way-stretch material with a water-repellent, wind-resistant surface.



Black Opal
BLO

Dolphin Grey
DOG

Marina Blue
MAB



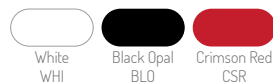
ST5240 · S-2XL · 250 g/m² · 10

ST5340 · S-XL · 250 g/m² · 10

Softest Shell Hooded Jacket

for men

94% polyester, 6% elastane · breathability 1.000 g/m², water resistance 2.000 mm, wind- and water-resistant TPU membrane, 4-way-stretch fabric bonded with mesh, metal ventilation eyelets under sleeves (nickel-free), adjustable multipiece hood, adjustable hem, adjustable sleeve hems with hook and loop fastener, side and chest pockets with zipper, storm flap, hang loop, side seams and side panels (front and back), small size label in the collar, care label in the side seam



Softest Shell Hooded Jacket

for women

ANIMAL FRIENDLY

NO LABEL IN COLLAR

NORMAL FIT



ST5250 · S-2XL · 10

Biker Jacket

for men

100% leather look (polyurethane) · good heat insulation, water-resistant, wind repellent, side pockets with metal zippers (nickel-free), metal zipper (nickel-free), shoulder and sleeve yoke with decorative stitches, hang loop, side seams and side panels, zip opening in back lining for easy decoration, small size label in the collar, care label in the side seam · **Men:** back with centre seam, narrow stand-up collar with push button, 2 inside pockets, chest pocket with metal zipper (nickel-free), storm flap with decorative stitches · **Women:** wide storm flap, shorter back with centre seam, sleeve slits with zipper

ANIMAL FRIENDLY

NO LABEL IN COLLAR

NORMAL FIT



ST5350 · S-XL · 10

Biker Jacket

for women



Fashion-forward styles in animal-friendly leather look. Zip opening in back lining for easy decoration.



Knit Long Sleeve
(page 49)

Biker Jacket
(page 108)

NYLON

NO LABEL
IN COLLAR

Stedman
collection

Athletic and masculine silhouette. Lightweight, wind- and water-resistant. Zip opening in back lining for easy decoration.

NORMAL FIT



ST5280 · S-2XL · 10

Pilot Jacket

for men

100% nylon · water-resistant, wind repellent, inside pocket with hook and loop fastener, side pockets, metal zipper (nickel-free), wide rib cuffs and waistband, rib collar, hang loop, side seams, zip opening in back lining for easy decoration, small size label in the collar, care label in the side seam

Black Opal
BLO

NO LABEL
IN COLLAR

NORMAL FIT

NO LABEL
IN COLLAR

NORMAL FIT



Lightweight with durable shell
and warm filling.



ST5360 · S-XL · 10

ST5260 · S-2XL · 10

Quilted Jacket

for women

Quilted Jacket

for men

100% polyester · wind repellent, excellent heat insulation at light weight, water-resistant, collar and front edge with brown piping (leather look), attached pocket (patch pocket) with push buttons, zipper with metal puller (nickel-free), stand-up collar, hang loop made of piping stripe (leather look), storm flap, small size label in the collar, care label in the side seam · **Men:** back with centre seam, side seams · **Women:** side seams and side panels (front and back)



Black Opal
BLO Military Green
MIL



Quilted Jacket
(page 110)

NO LABEL
IN COLLAR

Stedman
collection

Lightweight, modern style for men. Zip opening in back lining for easy decoration.

NORMAL FIT



ST5270 · S-2XL · 10

Quilted Blouson

for men

100% polyester · excellent heat insulation at light weight, water-resistant, wind repellent, zipper with metal puller (nickel-free), wide rib cuffs and waistband, stand-up collar, 2 side pockets with zippers, hang loop, side seams, zip opening in back lining for easy decoration, small size label in the collar, care label in the side seam



Black Opal
BLO

Stedman® Colours 2020



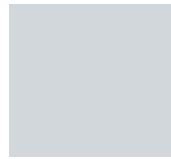
WHI / WHT
WHITE / NANO WHITE



WWI / CRW
WINTER WHITE / CREAM WHITE



ASH
ASH



PGY
POWDER GREY



SGY
SOFT GREY



DOG
DOLPHIN GREY



LGY
LIGHT GREY



SIG
SILVER GREY



GYH
GREY HEATHER



LGM
LIGHT GREY MELANGE



VGR
VINTAGE GREY



RGY
REAL GREY



SLG
SLATE GREY



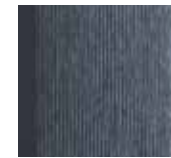
GRG
GRANITE GREY



GRS
GREY STEEL



DGM
DARK GREY MELANGE



LGT
LIGHT GREY TRANSITION



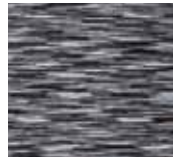
DGT
DARK GREY TRANSITION



ANM
ANTHRA MELANGE



ASP
ASPHALT



BOM
BLACK OPAL MELANGE



CHH
CHARCOAL HEATHER



ANH
ANTHRA HEATHER



BLO / BLK
BLACK OPAL / NANO BLACK



BLM
BLUE MIDNIGHT



MAH
MARINA HEATHER



MBM
MARINA BLUE MELANGE



MAB
MARINA BLUE



NAV
NAVY BLUE



NAH
NAVY HEATHER



DAB
DARK BLUE



TUB
TRUE BLUE



BLT
BLUE TRANSITION



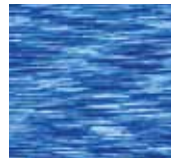
DMB
DENIM BLUE



DMH
DENIM HEATHER



KIB
KING BLUE



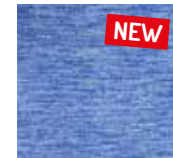
KBM
KING BLUE MELANGE



BRR
BRIGHT ROYAL



BUM
BLUE MELANGE



BLH
BLUE HEATHER



HOR
HORIZON



VBL
VINTAGE BLUE



BBL
BRILLIANT BLUE



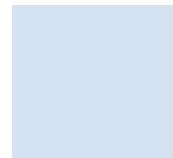
HWB
HAWAII BLUE



OCB
OCEAN BLUE



LBL
LIGHT BLUE



PBL
POWDER BLUE



FRO
FROSTED BLUE



PAB
PACIFIC BLUE



TUQ
TURQUOISE



AQH
AQUA HEATHER



CAL
CORAL



CLH
CORAL HEATHER



SPK
SWEET PINK



OCH
ORCHID



CUP
CUCKAKE PINK



LAP
LAVENDER PURPLE



PRH
PURPLE HEATHER



DLC
DEEP LILAC



DBY
DEEP BERRY



PRM
PURPLE MELANGE



PRO
POWDER ROSE



VRO
VINTAGE ROSE



BGR
BURGUNDY RED



BOD
BORDEAUX



CEH
CHERRY HEATHER



PER
PEPPER RED



CSR
CRIMSON RED



SRE
SCARLET RED



ORA
ORANGE



COR
CYBER ORANGE



PUM
PUMPKIN



PUH
PUMPKIN HEATHER



PPM
PUMPKIN MELANGE



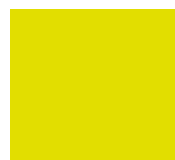
BOR
BRILLIANT ORANGE



SAL
SALMON



SAP
SALMON PINK



CBY
CYBER YELLOW



YEL
YELLOW



DYY
DAISY YELLOW



SUN
SUNFLOWER YELLOW



INY
INDIAN YELLOW



PGN
POWDER GREEN



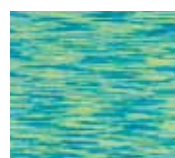
BLI
BRIGHT LIME



GFL
GREEN FLASH



KIW
KIWI GREEN



KWM
KIWI MELANGE



BAH
BAHAMA GREEN



KEG
KELLY GREEN



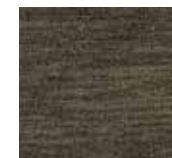
EGR
EARTH GREEN



HGR
HUNTERS GREEN



MIL
MILITARY GREEN



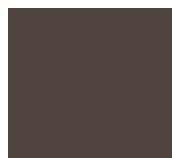
OLM
OLIVE MELANGE



BOG
BOTTLE GREEN



VBR
VINTAGE BROWN



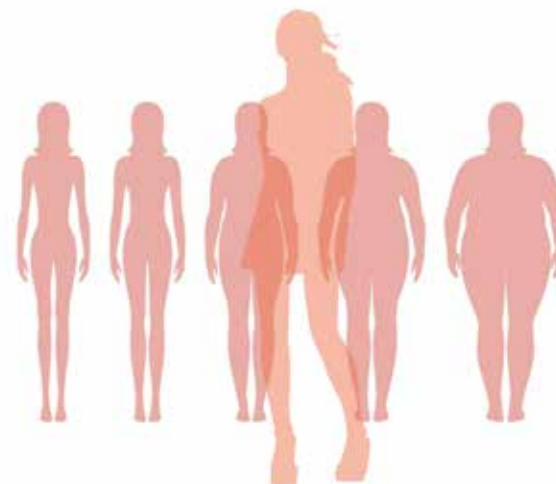
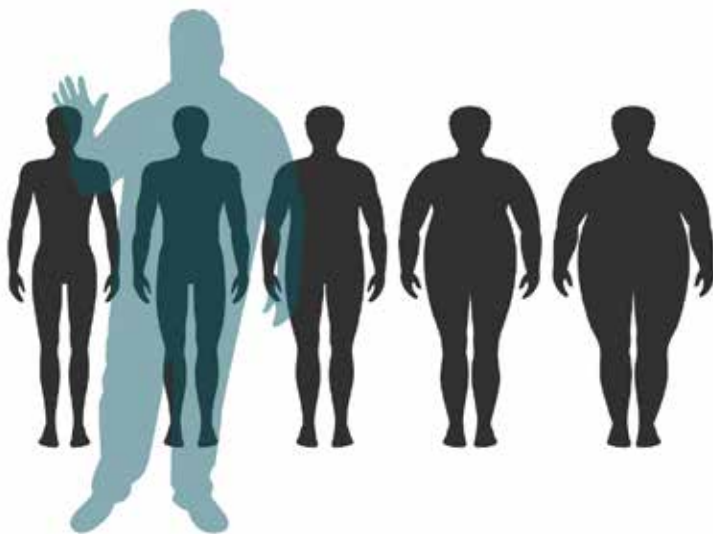
DCH
DARK CHOCOLATE

2XS - 5XL

More Sizes! We are expanding our size range again.

For selected styles our smallest adult size **starts at 2XS** and we go **up to amazing 5XL**.

**SUPER BIG
SIZE RANGES ...**



**... FOR MEN
AND WOMEN!**

Men

EU	DE	FR. ES. PT	IT	UK	Body height	Chest	Waist	Hips
XS	42-44	42-44	32-34	32-34	159-164 cm	78-85 cm	66-73 cm	84-88 cm
					63-65 inches	31-33 inches	26-29 inches	33-35 inches
S	44-46	44-46	34-36	34-36	166-173 cm	86-93 cm	74-81 cm	92-96 cm
					65.5-68 inches	34-37 inches	29-32 inches	36-39 inches
M	48-50	48-50	38-40	38-40	171-179 cm	94-101 cm	82-89 cm	100-104 cm
					67.5-70.5 inches	37-40 inches	33-35 inches	39.5-41 inches
L	52-54	52-54	42-44	42-44	177-184 cm	102-109 cm	90-99 cm	108-112 cm
					70-72.5 inches	40-43 inches	35.5-39 inches	42.5-44 inches
XL	56-58	56-58	46-48	46-48	182-188 cm	110-117 cm	100-109 cm	116-120 cm
					72-74 inches	43.5-46 inches	39.5-43 inches	46-47 inches
2XL	60-62	60-62	50-52	50-52	185-191 cm	118-125 cm	110-119 cm	124-128 cm
					73-75 inches	46.5-49 inches	43.5-47 inches	49-50.5 inches
3XL	64-66	64-66	54-56	54-56	185-191 cm	126-133 cm	120-129 cm	132-136 cm
					73-75 inches	50-52 inches	47-51 inches	52-53.5 inches
4XL	68-70	68-70	58-60	58-60	191-195 cm	134-141 cm	130-139 cm	137-141 cm
					75-77 inches	53-56 inches	51-55 inches	54-56 inches
5XL	72	72	62	62	198-204 cm	142-145 cm	140-144 cm	142-148 cm
					78-80.5 inches	56-57 inches	55-56.5 inches	56-58 inches

Children

EU	Age	Body height	Chest	Waist	Hips
3XS	1-2 years	86-92 cm	53-54 cm	49-52 cm	52-56 cm
		34-36 inches	20.5-21 inches	19-20.5 inches	20.5-22 inches
2XS	3-4 years	98-104 cm	55-56 cm	52-53 cm	57-60 cm
		38.5-41 inches	21.5-22 inches	20.5-21 inches	22-24 inches
XS	5-6 years	110-116 cm	57-58 cm	54-55 cm	61-63 cm
		43.5-46 inches	22.5-23 inches	21.5-22 inches	24-25 inches
S	7-8 years	122-128 cm	61-64 cm	56.5-58 cm	66-69 cm
		48-50.5 inches	24-25 inches	22-23 inches	26-27 inches
M	9-10 years	134-140 cm	67-70 cm	59-61 cm	72-75 cm
		53-55 inches	26.5-28 inches	23-24 inches	28.5-29.5 inches
L	11-12 years	146-152 cm	73-76 cm	62-65 cm	78-81 cm
		57.5-60 inches	29-30 inches	24-26 inches	31-32 inches
XL	12-13 years	158-164 cm	79-82 cm	65-69 cm	85-87 cm
		62-65 inches	31-32.5 inches	26-27 inches	33.5-34.5 inches

Women

EU	DE	FR. ES. PT	IT	UK	Body height	Chest	Waist	Hips
XS	32-34	34-36	40-42	6-8	165-172 cm	74-81 cm	58-65 cm	85-91 cm
					65-68 inches	29-32 inches	23-26 inches	33-36 inches
S	36-38	38-40	42-44	8-10	165-172 cm	82-89 cm	66-73 cm	92-98 cm
					65-68 inches	32.5-35 inches	26-29 inches	36-39 inches
M	40-42	42-44	46-48	10-12	165-172 cm	90-97 cm	74-81 cm	99-104 cm
					65-68 inches	35.5-38 inches	29-32 inches	39-41 inches
L	44-46	46-48	50-52	12-14	165-172 cm	98-107 cm	82-90 cm	105-112 cm
					65-68 inches	39-42 inches	32.5-35.5 inches	41.5-44 inches
XL	48-50	50-52	54-56	16-18	165-172 cm	108-119 cm	91-102 cm	113-121 cm
					65-68 inches	42.5-47 inches	36-40 inches	44.5-48 inches
2XL	52-54	54-56	58-60	18-20	165-172 cm	120-131 cm	103-114 cm	122-132 cm
					65-68 inches	47-52 inches	41-45 inches	48-52 inches
3XL	56-58	58-60	62-64	20-22	165-172 cm	132-142 cm	115-126 cm	133-143 cm
					65-68 inches	52-56 inches	45-50 inches	52-56 inches
4XL	60-62	62-64	66-68	22-24	165-172 cm	143-153 cm	127-136 cm	144-154 cm
					65-68 inches	56-60 inches	50-54 inches	57-61 inches

Unisex

EU	DE	FR. ES. PT	IT	UK	Body height	Chest	Waist	Hips
2XS	(34)	(36-38)	42	(6-8)	156-162 cm	74-81 cm	58-65 cm	85-91 cm
					61.5-64 inches	29-32 inches	23-26 inches	33-36 inches
XS	(36)	(38-40)	44	(6-8)	159-164 cm	82-89 cm	66-73 cm	92-98 cm
					63-65 inches	32.5-35 inches	26-29 inches	36-39 inches
S	44-46 (38-40)	44-46 (42-44)	34-36	34-36 (10-12)	165-173 cm	86-97 cm	74-81 cm	92-98 cm
					65-68 inches	34-38 inches	29-32 inches	36-39 inches
M	48-50 (42-44)	48-50 (46-48)	38-40	38-40 (12-14)	165-179 cm	90-101 cm	82-90 cm	99-104 cm
					65-70.5 inches	35.5-40 inches	32.5-35.5 inches	39-41 inches
L	52-54 (46-48)	52-54 (50-52)	42-44	42-44 (16-18)	170-184 cm	98-109 cm	90-102 cm	105-112 cm
					67-72.5 inches	39-43 inches	35.5-40 inches	41.5-44 inches
XL	56-58	56-58	46-48	46-48 (18-20)	182-188 cm	108-119 cm	91-109 cm	113-121 cm
					72-74 inches	42.5-47 inches	36-43 inches	44.5-48 inches
2XL	60-62	60-62	50-52	50-52	185-191 cm	118-131 cm	103-119 cm	122-132 cm
					73-75 inches	46.5-52 inches	41-47 inches	48-52 inches
3XL	64-66	64-66	54-56	54-56	185-191 cm	126-142 cm	115-129 cm	132-143 cm
					73-75 inches	50-56 inches	45-51 inches	48-56 inches
4XL	68-70	68-70	58-60	58-60	191-195 cm	134-153 cm	127-139 cm	137-154 cm
					75-77 inches	53-60 inches	50-55 inches	54-61 inches
5XL	72	72	62	62	198-204 cm	142-170 cm	140-160 cm	142-176 cm
					78-80.5 inches	56-67 inches	55-63 inches	56-69.5 inches

(Women's sizes in brackets)

Our Fabrics

Fashionable high-quality fabrics with unique properties and a great wearing comfort.

Recycled

NEW!

Our recycled polyester offers the same high-quality characteristics as “normal” polyester but with a smaller environmental footprint. Compared to virgin polyester, the production of recycled polyester requires far less energy, causes significantly less CO₂ emissions and helps keeping plastic waste from going to landfills and our oceans. In the Stedman® collection you can find recycled polyester in sports shirts, sports jackets, sweatshirts, sweatpants and fleece jackets.



Organic Cotton

Organic cotton is grown without the use of pesticides, herbicides or other chemical fertilizers and is therefore particularly gentle on people and nature. Our organic styles are made of 100% OCS-certified organic ring-spun cotton. Environmentally friendly, fashionable and absolutely soft on the skin. These styles offer all the advantages of a classic promotional T-shirt and at the same time the good feeling of having made a small contribution to environmental protection.



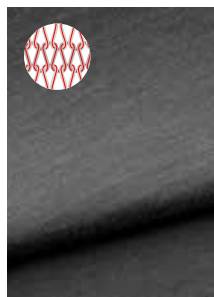
Ring-spun Cotton

Cotton is a soft, absorbent and breathable natural fibre, making it the perfect choice for clothing worn close to the skin. T-shirts made of cotton fabric are very airy, durable and easy to clean. For our cotton styles, we only use high-quality ring-spun cotton. Ring-spun yarn is made by twisting and thinning the cotton strands to make a very fine, strong, soft rope of cotton fibres. Ring-spun cotton T-shirts are significantly softer, more durable and last longer than their regular counterparts.



Elastane

Elastane is a durable, highly elastic material that returns to its original shape after each stretch. For our Stedman® collection we use the "full feeder" technology, allowing elastane to evenly spread over the entire surface of the fabric. This leads to a high wearing comfort and a smooth surface that is excellent for printing.



Viscose

Viscose is a high-quality material made from the natural raw material cellulose. The fibre is very soft to the touch, moisture-absorbent and very breathable. It can be both glossy and matt and thus take on the look of wool, silk or cotton. T-shirts with a viscose share drape fluidly around your body, creating a premium wearing comfort as well as an elegant, flattering silhouette.



ACTIVE-DRY° Polyester

Stedman®'s ACTIVE-DRY° polyester is a quick-drying fabric with great moisture-control that is soft to the touch and very elastic. Therefore it is perfectly suitable for sports and functional clothing. The airy fabrics are very moisture-wicking and provide a pleasant feeling even during intensive workouts. T-shirts made of ACTIVE-DRY° polyester offer not only great wearing comfort, but also ideal conditions for various textile finishings.



Nylon

Nylon fabrics are smooth, moisture-wicking and very durable, making them the perfect choice for athletic and outdoor clothing. Nylon is one of the lightest textile fibres and at the same time one of the strongest. Thanks to its high elasticity and moisture-wicking properties, nylon textiles offer great wearing comfort and excellent freedom of movement. In the Stedman® collection you can find nylon in sports shirts, sports tights, sports bras, padded jackets and vests.



Softest Shell

The outstanding properties of our Softest Shell styles are their low weight and the combination of two layers of clothing in one. Softest Shell combines an outer layer to protect against wind and weather with an inner mesh layer. Thus, Softest Shell products are wind-, water- and dirt-repellent. The pleasantly elastic material ensures a high level of wearing comfort.



Fleece

Fleece jackets are popular and indispensable companions in everyday life or for outdoor activities, as they provide strong insulation and can absorb and release moisture very well. They are light, breathable and keep you pleasantly warm even in cooler weather. There are many different kinds of fleece fabrics. The Stedman® collection includes Micro Fleece, Knit Fleece, Melange Fleece and Power Fleece.



Polyurethane (leather look)

Polyurethane fabrics are durable and abrasion-resistant, yet soft, light and breathable. As such, they are used to create more comfortable and sophisticated weatherproof clothing that is even washable at 40°C. Thanks to the high-quality polyurethane, our Biker Jackets do not only look like leather, but also have similar stretch, stiffness and permeability properties like genuine leather jackets.



Men's

N1000	Nano	33	ST8050	Piqué Polo	90
ST2000	Classic-T Unisex	25	ST8400	Active 140 Crew Neck	82
ST2010	Classic-T Fitted	27	ST8410	Active 140 Raglan	83
ST2020	Classic-T Organic	22	ST8420	Active 140 Long Sleeve	85
ST2100	Comfort-T 185	21	ST8440	Active 140 Sleeveless	84
ST2130	Comfort-T 185 Long Sleeve	48	ST8450	Active 140 Polo	85
ST2300	Classic-T V-neck	40	ST8600	Cotton Touch	89
ST2500	Classic-T Long Sleeve	48	ST8800	Seamless Raglan	80
ST2800	Classic Tank Top	43	ST8810	Seamless Raglan Flow	78
ST2810	Tank Top	42	ST8820	Seamless Jacket	79
ST3000	Polo	52	ST8830	Recycled Sports-T Move	69
ST3400	Polo Long Sleeve	53	ST8840	Recycled Sports-T Reflect	71
ST4000	Unisex Sweatshirt	59	ST8850	Recycled Sports-T Race	73
ST4100	Hooded Sweatshirt	61	ST9000	Ben Crew Neck	18
ST4200	Unisex Hooded Sweatshirt	60	ST9010	Ben V-neck	39
ST5010	Fleece Vest	98	ST9020	Morgan Crew Neck	19
ST5020	Fleece Half-Zip	100	ST9040	Morgan Long Sleeve	44
ST5030	Fleece Jacket	99	ST9050	Henry Polo	50
ST5040	Power Fleece Jacket	102	ST9060	Harper Polo	51
ST5060	Melange Fleece Jacket	101	ST9080	Knit Long Sleeve	49
ST5080	Hooded Fleece Jacket	100	ST9100	Finest Cotton-T	20
ST5090	Striped Fleece Jacket	96	ST9200	James Organic Crew Neck	16
ST5200	Padded Jacket	104	ST9210	James Organic V-neck	37
ST5210	Padded Vest	105	ST9220	Slub Organic	29
ST5230	Softest Shell Jacket	106	ST9400	Shawn Slub Crew Neck	30
ST5240	Softest Shell Hooded Jacket	107	ST9410	Shawn Slub V-neck	41
ST5250	Biker Jacket	108	ST9430	Shawn Henley T-shirt	32
ST5260	Quilted Jacket	110	ST9450	Shawn Oversized Slub	31
ST5270	Quilted Blouson	111	ST9460	Shawn Henley Long Sleeve	46
ST5280	Pilot Jacket	109	ST9600	Clive Crew Neck	13
ST5600	Sweat Hoodie	62	ST9610	Clive V-neck	35
ST5610	Sweat Jacket	63	ST9620	Clive Long Sleeve	45
ST5620	Sweatshirt	58	ST9630	Clive Relaxed	12
ST5630	Recycled Unisex Sweat Hoodie	64	ST9690	Dean Deep V-neck	34
ST5650	Recycled Unisex Sweatpants	65	ST9691	Dexter Boxers	55
ST5830	Performance Jacket	91	ST9692	Dexter Briefs	55
ST5840	Recycled Scuba Jacket	75	ST9800	Luke Crew Neck	15
ST5850	Knit Fleece Jacket	97	ST9810	Luke V-neck	38
ST5860	Recycled Fleece Jacket Hero	95	ST9850	David Oversized	14
ST8000	Sports-T	86	ST9860	Luke Henley Long Sleeve	47
ST8010	Sports Top	87			
ST8020	Intense Tech	88			
ST8030	Active 140 Team Raglan	81			

Shawn Oversized Slub
(page 31)



Women's

N1100	Nano	33
ST2000	Classic-T Unisex	25
ST2160	Comfort-T 185	21
ST2600	Classic-T Fitted	27
ST2620	Classic-T Organic	22
ST2700	Classic-T V-neck	40
ST2900	Classic Tank Top	43
ST3100	Polo	52
ST4000	Unisex Sweatshirt	59
ST4110	Hooded Sweatshirt	61
ST4200	Unisex Hooded Sweatshirt	60
ST5100	Fleece Jacket	99
ST5110	Fleece Vest	98
ST5120	Power Fleece Jacket	102
ST5190	Striped Fleece Jacket	96
ST5300	Padded Jacket	104
ST5310	Padded Vest	105
ST5330	Softest Shell Jacket	106
ST5340	Softest Shell Hooded Jacket	107
ST5350	Biker Jacket	108
ST5360	Quilted Jacket	110
ST5630	Recycled Unisex Sweat Hoodie	64
ST5650	Recycled Unisex Sweatpants	65
ST5700	Sweat Hoodie	62
ST5710	Sweat Jacket	63
ST5930	Performance Jacket	91
ST5940	Recycled Scuba Jacket	75
ST5950	Knit Fleece Jacket	97
ST5960	Recycled Fleece Jacket Hero	95
ST8100	Sports-T	86
ST8110	Sports Top	87
ST8120	Intense Tech	88
ST8130	Active I40 Team Raglan	81
ST8320	3/4 Sports Tights	76
ST8330	Sports Bra	76
ST8500	Active I40 Raglan	83
ST8540	Active I40 Tank	84
ST8700	Cotton Touch	89
ST8900	Seamless Raglan	80
ST8910	Seamless Raglan Flow	78
ST8920	Seamless Jacket	79
ST8930	Recycled Sports-T Move	69
ST8940	Recycled Sports-T Reflect	71

ST8950	Recycled Sports-T Race	73
ST8990	Seamless Tights	79
ST9110	Finest Cotton-T	20
ST9120	Megan Crew Neck	19
ST9130	Megan V-neck	39
ST9150	Hanna Polo	51
ST9180	Knit Long Sleeve	49
ST9300	Janet Organic Crew Neck	16
ST9310	Janet Organic V-neck	37
ST9320	Slub Organic	29
ST9500	Sharon Slub Crew Neck	30
ST9510	Sharon Slub V-neck	41
ST9530	Sharon Henley T-shirt	32
ST9550	Sharon Oversized Slub	31
ST9580	Sharon Henley Long Sleeve	46
ST9700	Claire Crew Neck	13
ST9710	Claire V-neck	35
ST9720	Claire V-neck Long Sleeve	45
ST9730	Claire Relaxed	12
ST9900	Lisa Crew Neck	15
ST9910	Lisa V-neck	38
ST9950	Daisy Oversized	14

Children's

ST2200	Classic-T Kids	26
ST2220	Classic-T Organic Kids	23
ST3200	Polo Kids	53
ST5170	Fleece Jacket Kids	99
ST8170	Sports-T Kids	86
ST8570	Active I40 Raglan Kids	83
ST9370	Jamie Organic Kids	17

Unisex

ST2000	Classic-T Unisex	25
ST4000	Unisex Sweatshirt	59
ST4200	Unisex Hooded Sweatshirt	60
ST5630	Recycled Unisex Sweat Hoodie	64
ST5650	Recycled Unisex Sweatpants	65

Unisex Hooded Sweatshirt
(page 60)





www.stedman.eu



The PEFC Council (Programme for the Endorsement of Forest Certification schemes) is an independent, non-profit, nongovernmental organization, founded in 1999 which promotes sustainably managed forests through independent third party certification. The PEFC provides an assurance mechanism to purchasers of wood and paper products that they are promoting the sustainable management of forests.