



> GTX Preparation for long time rest

> We want to share our experience to give you **the best out of the GT Support.**

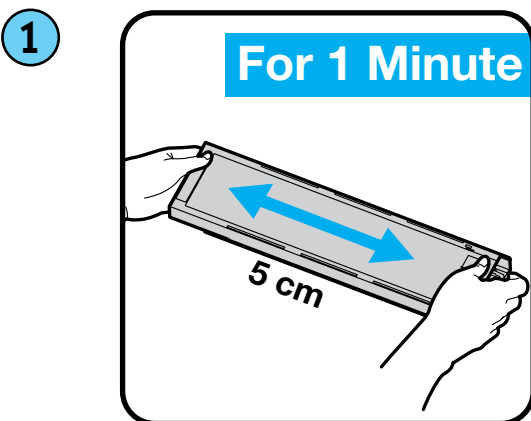
> PREPARATION OF GTX FOR LONG PERIOD WITHOUT PRINTING

We would like to inform you how to prepare the **GTX** before you leave the workshop for a long period without printing.

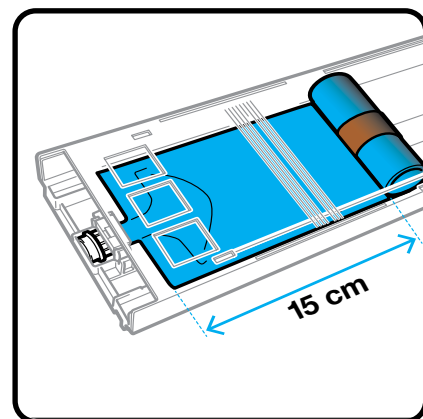
- ① First, **shake** the **White ink**.
- ② Then, do the **Weekly Maintenance** on the machine.
- ③ Print a **Nozzle Test** to see the status of both Printheads.
[If Nozzle Test is OK, then go to point 4. If not OK perform some cleanings and redo point 3]
- ④ Before leaving, make sure that the tank for the **Cleaning Solution** is filled.
- ⑤ And empty the **Waste Tank** also.
- ⑥ Keep the GTX switched **ON** so the circulation can take place continuously.
[Please note that this circulation does not consume any ink only a minimum of Cleaning Solution]

REDO the all same procedure every 2 weeks!


> DETAILED STEPS OF PROCEDURE




Take out the white ink cartridge from the printer. Shake the cartridge horizontally **100** times side by side to stir the white ink.



When the remaining ink level becomes approximately 15 cm, shake the cartridge. Open its cover and with ink pouch slightly winded, it will be easier to stir the ink.

> Repeat the same process on the other white ink cartridge! On the operation panel, press  and the White Ink refilling will be performed automatically by the printer!

2

 **W E E K L Y M A I N T E N A N C E**

+ Suction Cap Cleaning

+ Exhaust Cleaning

+ Wiper Cleaning


+ Nozzle Guards Cleaning

> Always use this menu to perform cleanings or replace parts :

Menu > Maintenance > Maintenance Part Clean/Replace >  and follow instructions on the display



Suction Cap & Exhaust Cleaning

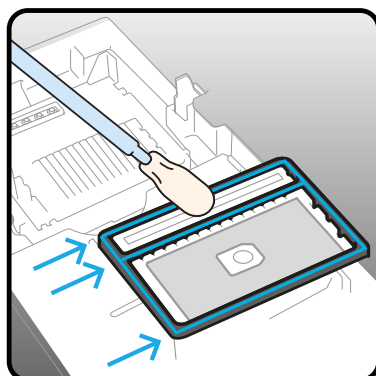
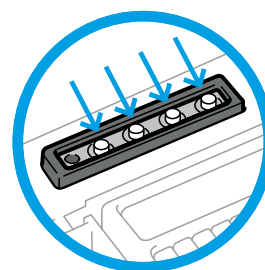
The black silicon lips of the two cappings should be cleaned with the **new Cleaning Stick**  dipped in **Cleaning Solution**.



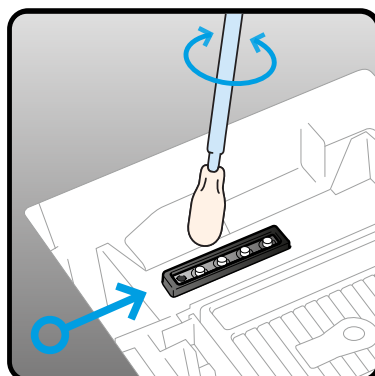
It is necessary to remove the build-up of the remaining ink staying on the edges of the cappings. It will prevent air leakage and keep the good suction of the pumps!
Be careful not to touch the foam! Keep it flat!

The **4 extrusion lances** [see in the blue circle...] and the hole sitting on the side of the capping at the **Exhaust** position need also to be cleaned and free of dried ink.

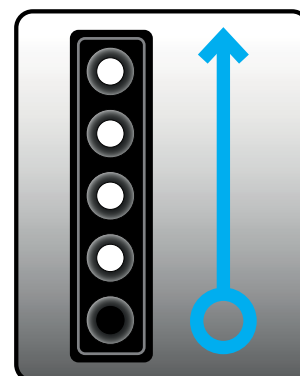
Always clean first the hole at the front and go backward while cleaning the **lances**!



Suction Cap Cleaning

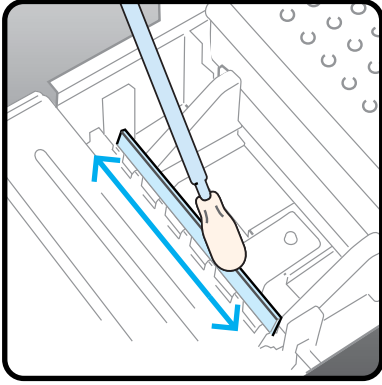


Exhaust Cleaning

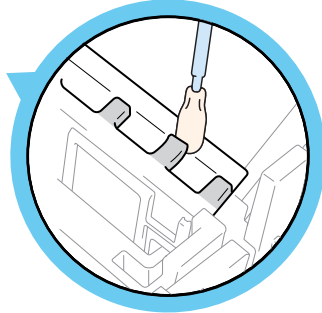


Direction to clean

Wiper Cleaning



Both white plastic wipers [White & CMYK] should be cleaned on **both** sides and top with the **Cleaning Stick** (T) dipped in **Cleaning Solution**.



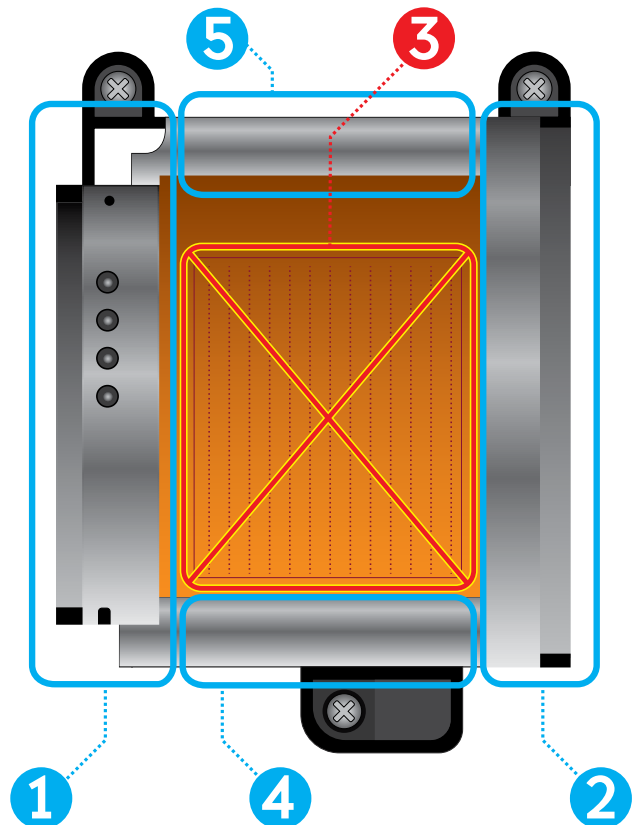
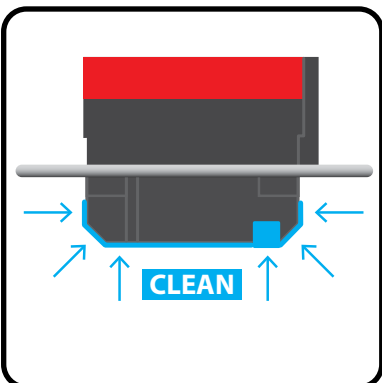
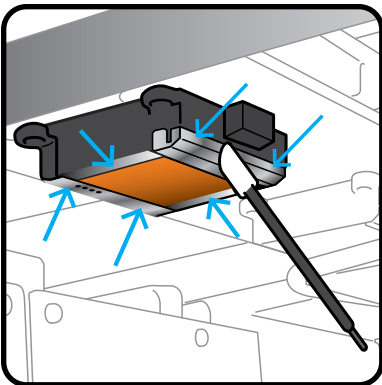
Use the tip of the **Cleaning Stick** (T) to clean **under** the teeth of the wiper holder and **remove the dried ink**.

Be sure to use the **Cleaning stick** (T) separately for **white** ink and **color** ink!

Nozzle Guards Cleaning

Wipe clean the 2 nozzle guards ① & ② with the **Clean Stick** (R) dipped in **Cleaning Solution**. Proceed the same way to clean the metallic parts ④ & ⑤. Be sure **not** to touch the **nozzle surface** ③ at all!

Manually move the carriage to such a position that you can perform the cleaning with ease.



> The remaining **Cleaning Solution** from the **Cleaning Cup** should be emptied in the **Waste Tank** below the printer!

3

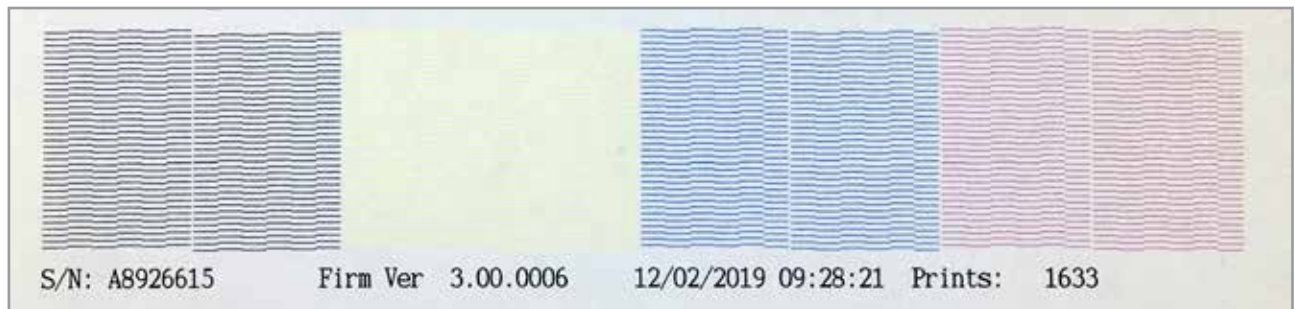
NOZZLE TESTS

You have to print a **Nozzle Test** for White & CMYK every morning before using the printer. It is the only way to know the **status** of the nozzles in the machine !


HOW TO DO A NOZZLE TEST ?

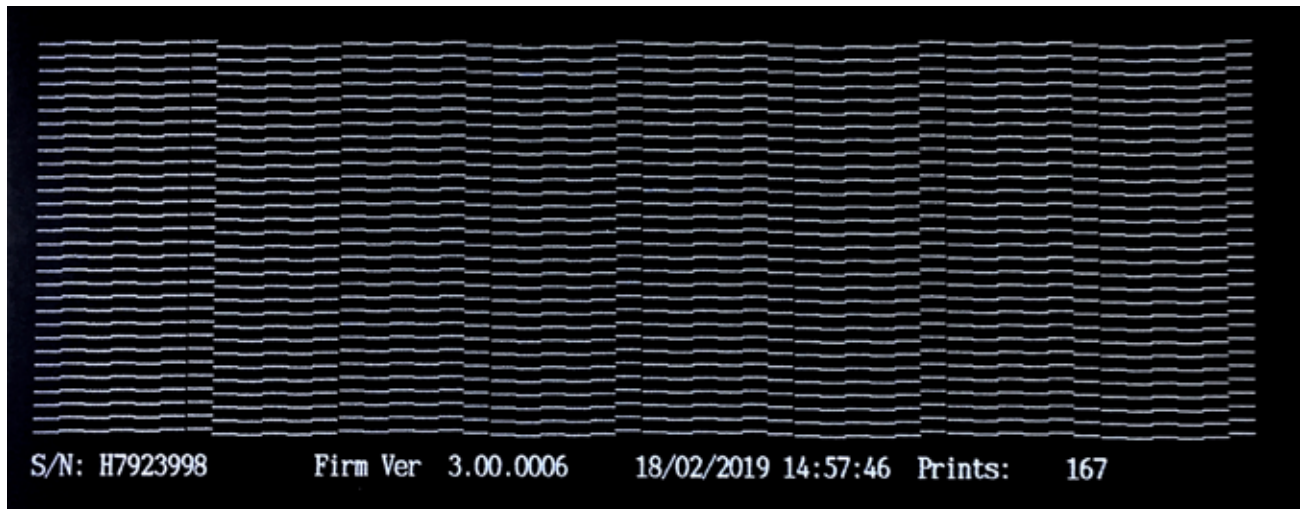
NZC Always place the **Platen** at level **A**

Menu > **Test Print** > **Nozzle Check CMYK** >  to check colors, print on white paper sheet



NZC Repeat the same procedure to perform a nozzle test of the **White** printhead

Menu > **Test Print** > **Nozzle Check White** >  to check White, print on a black paper sheet or inkjet plastic sheet



> If not all nozzles are firing, start a **Head Cleaning** to open the clogged nozzles!

HOW TO DO A PRINT HEAD CLEANING?

PHC If only a few nozzles are missing, select **Head Cleaning** > **Powerful Cleaning** ... and select PH + OK

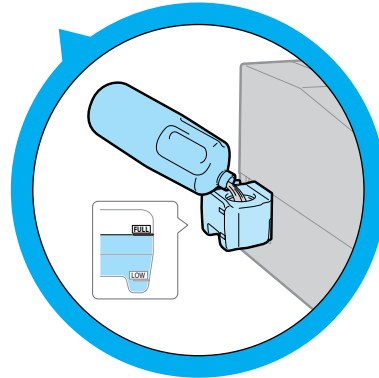
If more than 10 nozzles, select **Head Cleaning** > **Super Cleaning** ... and select PH + OK

> Perform a new Nozzle Test to check the result and redo cleanings if not **ALL** nozzles are firing!

4

CLEANING SOLUTION

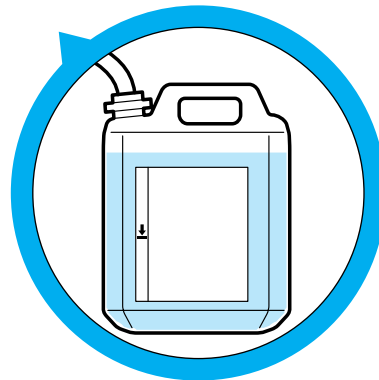
Please **fill in** the tank of the **Cleaning Solution** before leaving the machine alone.



5

WASTE TANK

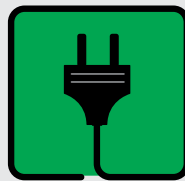
Please double-check if the **Waste Tank** needs to be **emptied!**



6

POWER ON

The Brother GTX should **ALWAYS** be left with **Power ON**



NEVER POWER OFF THE PRINTER!

Power is requested to perform the **needed recirculation** of the inks from time to time.



REDO the all same procedure every 2 weeks!