

BEKY-CII series

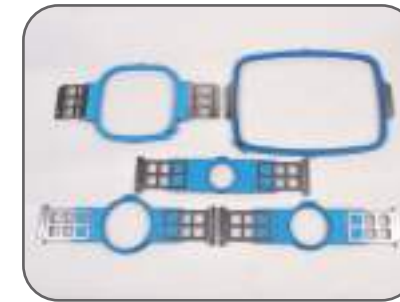


Barudan
THE MOST ADVANCED EMBROIDERY MACHINE SINCE 1959

Accessories



Wide Cap Frame



Frames for Finished Products



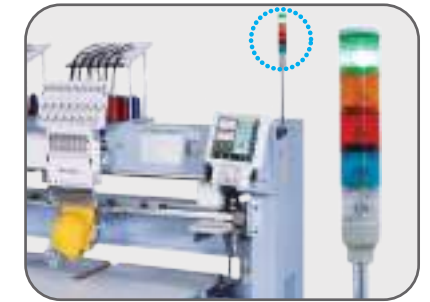
Portal Frame



Loop & Cord Device



Sequin Device



Signal Tower

B-net (Option)

Complete Production Management Software

B-NET is an embroidery machine networking system for seamless transfer of designs and offers the following.



Design File Server
Design transfer via LAN connection

Sewing Machine Manager
Machine status on floorplan

Design File Explorer
Design file viewing and managing

Design File Function Editor
Design editing and function changes

B-NET - Reporting
Productivity & status reporting

B-NET WEB
Machine status, history, and maintenance activities on browser (tablet compatible)

B-NET WEB API ※Optional
Web API lets B-NET integrate with the user's current order entry software

BARUDAN CO., LTD.



■ Sales Headquarter
20 Tsukagoshi, Josuiji, Ichinomiya-city, Aichi-pref.,
491-0004 Japan
Phone +81 586-76-1137
Fax +81-586-77-1499
URL <http://www.barudan.co.jp/>
E-mail info@barudan.co.jp

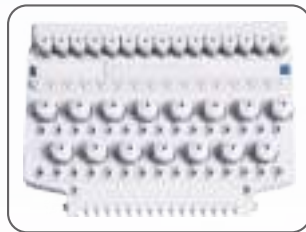
Agent:

High Spec Drop Table Machine with Servo Motor

The perfect machine for any size order.
Compact, Fast & Reliable.



MODEL
BEKY-S1506CII



New tensioner system for better and easier thread tensioning and improved thread break accuracy.



Featuring narrow cylinder arm.

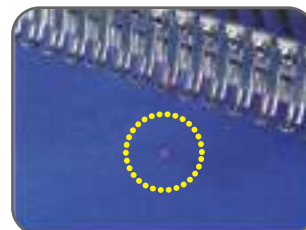


- Touch Screen Operation (10.4 inch, Resolution 800×600)
- Frame Centering Function
- Ability to Register Shortcuts into Multiple Groups
- 100 Memory Locations, 70 Million Stitch Capacity
- LAN Connector Standard, 1 COM Port & 1 USB Port, 1 Remote Controller Connector

Features



Frames for Finished Products Maximum
460 mm × 434 mm



Laser Pointer (First Head)



LED Back Light



Bobbin Winder (BN-III e)

Machine Specifications / Main Dimensions

MODEL	Embroidery Area (mm)	Needle Distance (mm)	Number of Needles	Stitch Length (mm)	Speed (rpm)		Power Supply (v)	Power Consumption (kw)	Dimensions (mm)		
					(Tubular Frame)	(Cap Frame)			L	W	H
BEKY-S1502CII	450 × 520 / 520	520	15	0.1~12.7	200~1100	200~1000	1 φ100~240 3 φ200~415	0.35	2045	1245	1690
BEKY-S1504CII	450 × 380 / 380	380							2385		
BEKY-S1506CII	450 × 520 / 520	520							3085		
	450 × 380 / 380	380							3145		
BEKY-S1508CII	450 × 380 / 380	380							4125		
BEKY-S1506CII	450 × 520 / 520	520	3905								
	450 × 380 / 380	380	5265								

Note 1 : The embroidery area indicated above allows for maximum pantograph movement. The frame used may restrict the actual embroidery field size.
Note 2 : Machines and Specifications are subject to change at any time without prior notice.

